

List of pages in this Trip Kit

Trip Kit Index

Airport Information For UNBG

Terminal Charts For UNBG

Revision Letter For Cycle 01-2014

Change Notices

Notebook

General Information

Location: Gorno-Altaysk Rus
IATA Code: RGK
Lat/Long: N51° 58.1' E085° 50.2'
Elevation: 967 ft

Airport Use: Public
Magnetic Variation: 5.9°E

Fuel Types: Jet A-1
Customs: No
Airport Type: IFR
Landing Fee: No
Control Tower: Yes
Jet Start Unit: No
LLWS Alert: No
Beacon: No

Sunrise: 0224 Z
Sunset: 1021 Z,

Runway Information

Runway: 02
Length x Width: 7546 ft x 138 ft
Surface Type: asphalt
TDZ-Elev: 953 ft
Lighting: Edge
Stopway: 164 ft

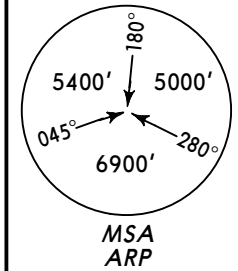
Runway: 20
Length x Width: 7546 ft x 138 ft
Surface Type: asphalt
TDZ-Elev: 967 ft
Lighting: Edge, ALS
Stopway: 164 ft

Communication Information

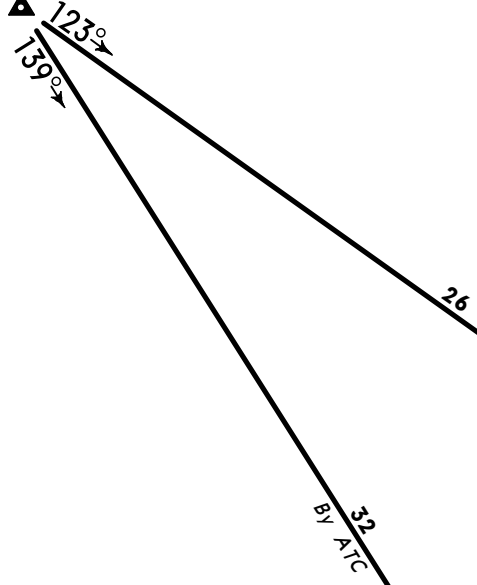
ATIS 128.1 Non-English
Dializ Tower Tower 133.0 Non-English
Dializ Transit Operations 119.0 Non-English

ATIS (Russian only) 128.1	Apt Elev 967'	Alt Set: MM (hPa on request) QNH on request (QFE) Trans level: FL80 Trans alt (hgt) : 6880' (5913') 1. Caution: Report about VFR conditions at TL. 2. Caution: If base of cloud is at or below 6880 (5913') descent from TL after passing GO according to chart. Landing configuration settings shall be carried out before passing PALOK. Aircraft not equipped with ATC transponder shall descent after passing GO according to established procedure. 3. Mountainous terrain.
--	-------------------------	--

**RWY 20 ARRIVALS
FOR RUSSIAN USERS ONLY**



KUDEB
N52 28.0 E085 23.0



Direct distance from
N52 08.0 E085 58.2 to:
Gorno-Altaysk Apt 11 NM

USTIS
N52 10.9 E085 58.2

At 3920'
(2953')

PALOK
N52 04.8 E085 55.2

At 3270'
(2303')

N52 07.5
E086 04.1

At 3920'
(2953')

***350 GO**
N52 01.6 E085 52.9

① N52 08.0 E085 58.2
(202° brg to GO)

At 3270'
(2303')



ALT/HEIGHT CONVERSION	
QNH	(QFE)
6880'	(5913' - 1800m)
3920'	(2953' - 900m)
3270'	(2303' - 700m)

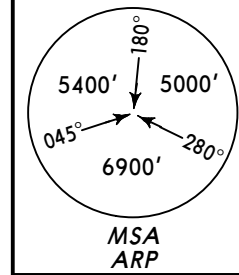
Apt Elev
967'

QNH on request (QFE)
Trans level: FL80 Trans alt (hgt) : 6880' (5913')
1. RWY 02: In case of emergency after take off turn LEFT, then land on RWY 20.
2. RWY 02: EXPECT downdrafts during crossing Katun river at distance 1NM from RWY 02/20.
3. RWY 20: Cross wind leg shall be performed at or above 2940' (1973').
4. Mountainous terrain.

RWYS 02, 20 DEPARTURES

CAT B, C & D

FOR RUSSIAN USERS ONLY



KUDEB
N52 28.0 E085 23.0



Direct distance from
Gorno-Altaysk Apt to:
KUDEB 34 NM

ALT/HEIGHT CONVERSION	QNH	(QFE)
2940'	(1973' - 600m)	
3270'	(2303' - 700m)	
3920'	(2953' - 900m)	
6880'	(5913' - 1800m)	

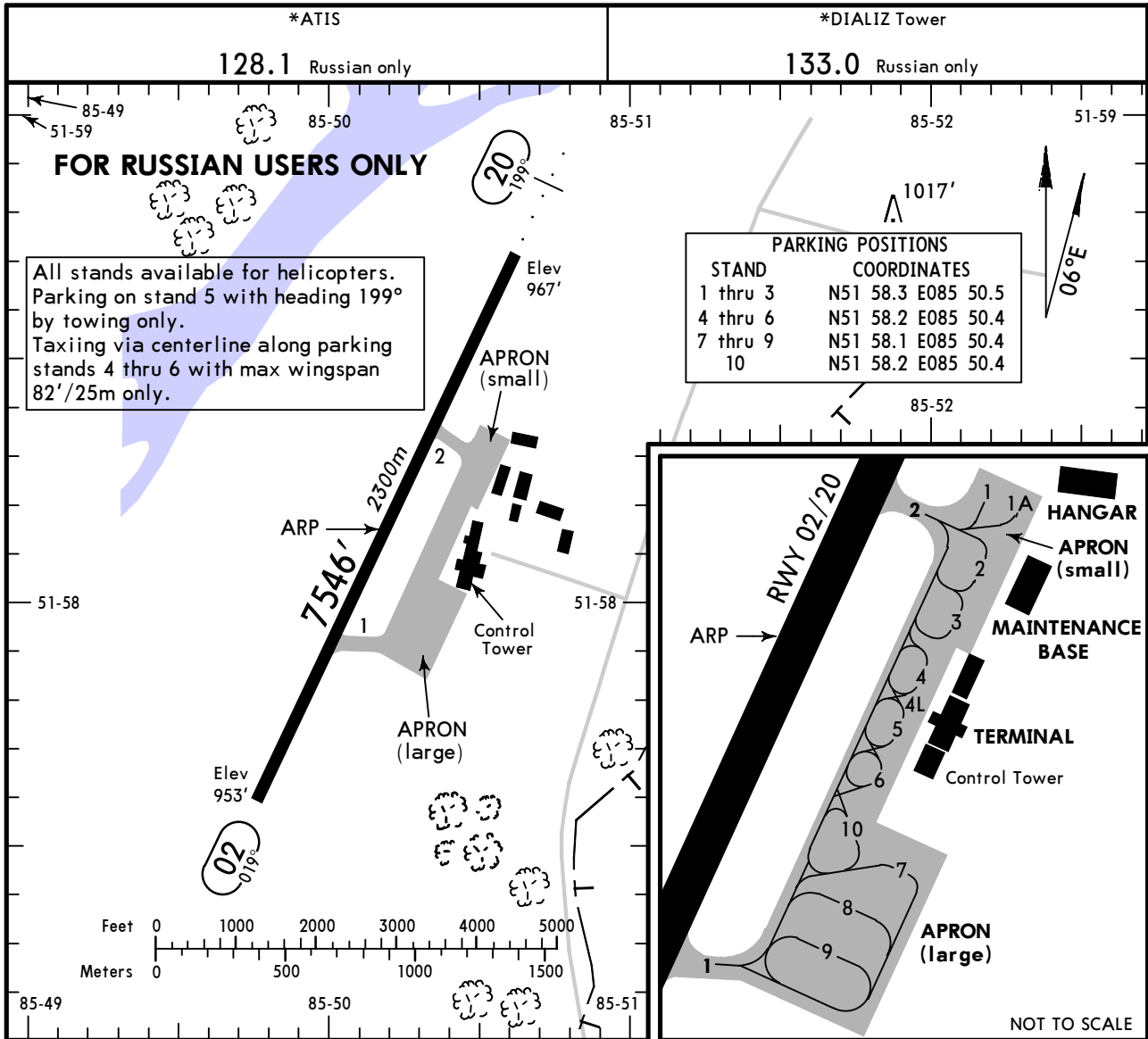
At 3920'
(2953')

At or above
2940'(1973')

These SIDs require minimum climb gradients of

RWY 02: 4.6%.
RWY 20: 7.0% up to 3270' (2303').

Gnd speed-KT	75	100	150	200	250	300
7.0% V/V(fpm)	532	709	1063	1418	1772	2127
4.6% V/V(fpm)	349	466	699	932	1165	1398



RWY		Threshold	Landing Beyond	TAKE-OFF	WIDTH
02				7382' ①	138'
20	ALS PAPI (angle 3.33°)	6635' 2022m	2250m	2250m	42m

① First 164'/50m unusable for take-off.

TAKE-OFF	
AIR CARRIER (JAA)	
All Rwys	
LVP must be in force	RCLM (DAY only) or RL
A	400m
B	
C	
D	

STRAIGHT-IN RWY		A	B	C	D
20	ILS	1673'(706') R1500m	1673'(706') R1500m	1689'(722') C2400m	1722'(755') C2400m
	LOC	NOT AUTH	NOT AUTH	NOT AUTH	NOT AUTH
	NDB ①②	1860'(893') R1500m	1860'(893') R1500m	1860'(893') C2400m	1890'(923') C2400m
	NDB ①③	2280'(1313') C5000m	2280'(1313') C5000m	2280'(1313') C5000m	2280'(1313') C5000m

- ① Continuous Descent Final Approach.
 ② with DME.
 ③ w/o DME.

TAKE-OFF RWY 02, 20		
	LVP must be in force	
	RCLM (DAY only) or RL	RCLM (DAY only) or RL
A		NIL (DAY only)
B	250m	400m
C		
D	300m	

Chart changes since cycle 26-2013

ADD = added chart, REV = revised chart, DEL = deleted chart.

ACT	PROCEDURE IDENT	INDEX	REV DATE	EFF DATE
-----	-----------------	-------	----------	----------

GORNO-ALTAYSK, (GORNO-ALTAYSK - UNBG)

TERMINAL CHART CHANGE NOTICES

No Chart Change Notices for Airport UNBG