

List of pages in this Trip Kit

Trip Kit Index

Airport Information For UERR

Terminal Charts For UERR

Revision Letter For Cycle 01-2014

Change Notices

Notebook

General Information

Location: Mirny Rus
IATA Code: MJZ
Lat/Long: N62° 32.1' E114° 02.3'
Elevation: 1162 ft

Airport Use: Public
Magnetic Variation: 10.4°W

Fuel Types: Jet A-1
Repair Types: Minor Engine
Customs: No
Airport Type: IFR
Landing Fee: No
Control Tower: Yes
Jet Start Unit: No
LLWS Alert: No
Beacon: No

Sunrise: 0149 Z
Sunset: 0710 Z,

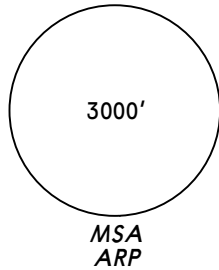
Runway Information

Runway: 07
Length x Width: 9186 ft x 148 ft
Surface Type: concrete
TDZ-Elev: 1123 ft
Lighting: Edge, ALS

Runway: 25
Length x Width: 9186 ft x 148 ft
Surface Type: concrete
TDZ-Elev: 1156 ft
Lighting: Edge, ALS, TDZ

Communication Information

ATIS 126.6 Non-English
Mirny Start/Landing Tower 129.0 Secondary Non-English
Mirny Start/Landing Tower 124.0 Secondary Non-English
Mirny Start/Landing Tower 134.1 Non-English
Mirny Tower 125.9 Non-English
Mirny Transit Operations 131.7 Non-English

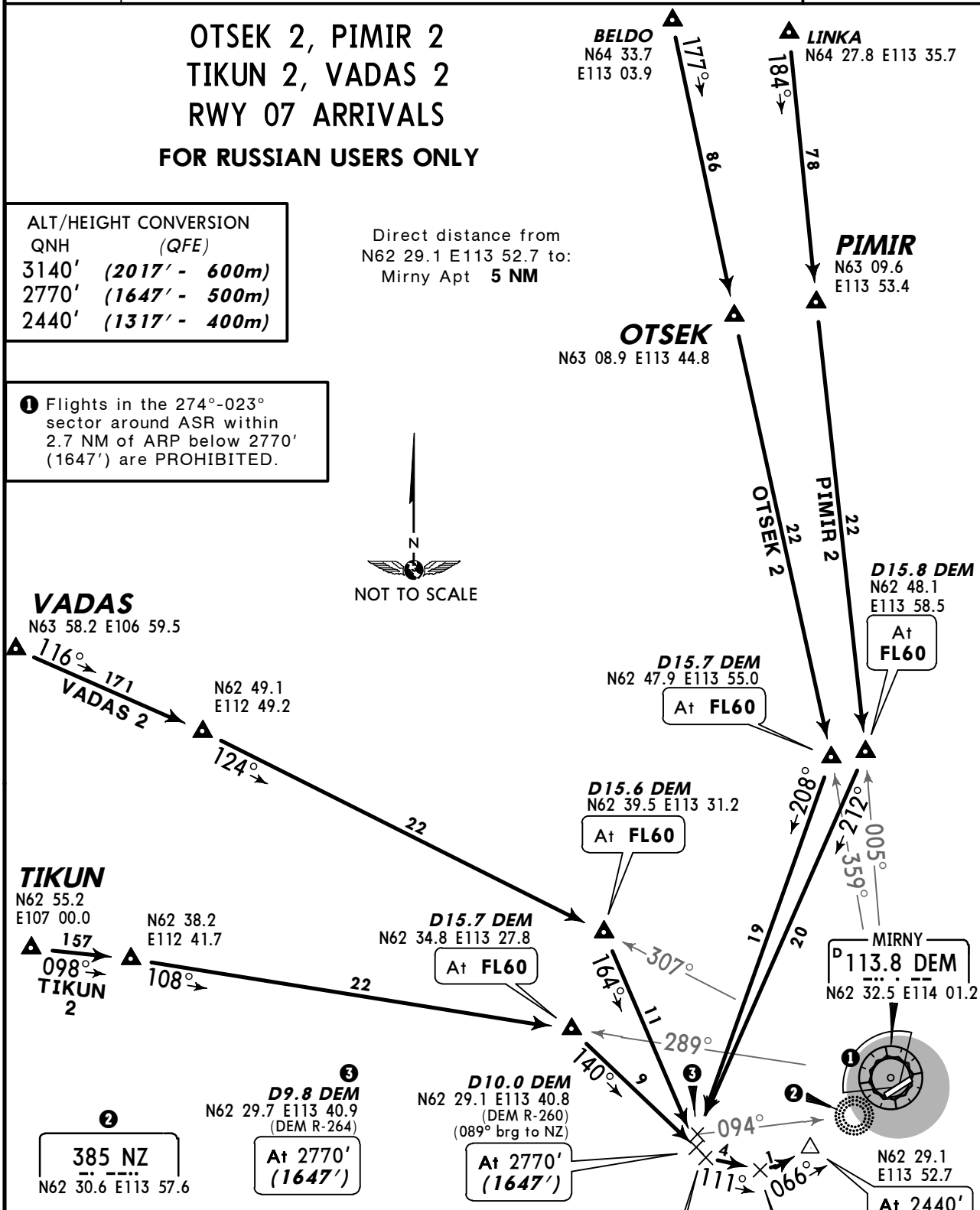
| | | |
|--------------------------------------|--|---|
| ATIS 126.6 Russian only | Alt Set: MM (hPa on request) QNH on req (QFE) Trans level: FL50 FL60 if pressure is less than 728 mm (960.6 hPa) and 701 mm (934.6 hPa) or above FL70 if pressure is less than 701 mm (934.6 hPa) Trans alt (hgt): 3140' (2017') |  |
| Apt Elev 1162' | Straight in approach available only under continuous RADAR control and receiving VORDME signals. Without continuous RADAR control proceed to NZ at TL, then descend to 2770' (1647') according to approach chart. | |

**OTSEK 2, PIMIR 2
TIKUN 2, VADAS 2
RWY 07 ARRIVALS**
FOR RUSSIAN USERS ONLY

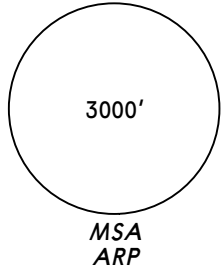
| ALT/HEIGHT CONVERSION | |
|-----------------------|----------------|
| QNH | (QFE) |
| 3140' | (2017' - 600m) |
| 2770' | (1647' - 500m) |
| 2440' | (1317' - 400m) |

Direct distance from
N62 29.1 E113 52.7 to:
Mirny Apt 5 NM

1 Flights in the 274°-023° sector around ASR within 2.7 NM of ARP below 2770' (1647') are PROHIBITED.



| Arrival Data for ACFT with MAX 160KT | | | | |
|--------------------------------------|-------|------|---------|--------------|
| From | Track | Dist | QDM LOM | Alt (Hgt) |
| N62 34.8 E113 27.8 | 137° | 10.0 | 085° | 2770'(1647') |
| N62 39.5 E113 31.2 | 152° | 12.5 | 087° | 2770'(1647') |
| N62 47.9 E113 55.0 | 200° | 18.3 | 089° | 2770'(1647') |
| N62 48.1 E113 58.5 | 195° | 19.3 | 090° | 2770'(1647') |

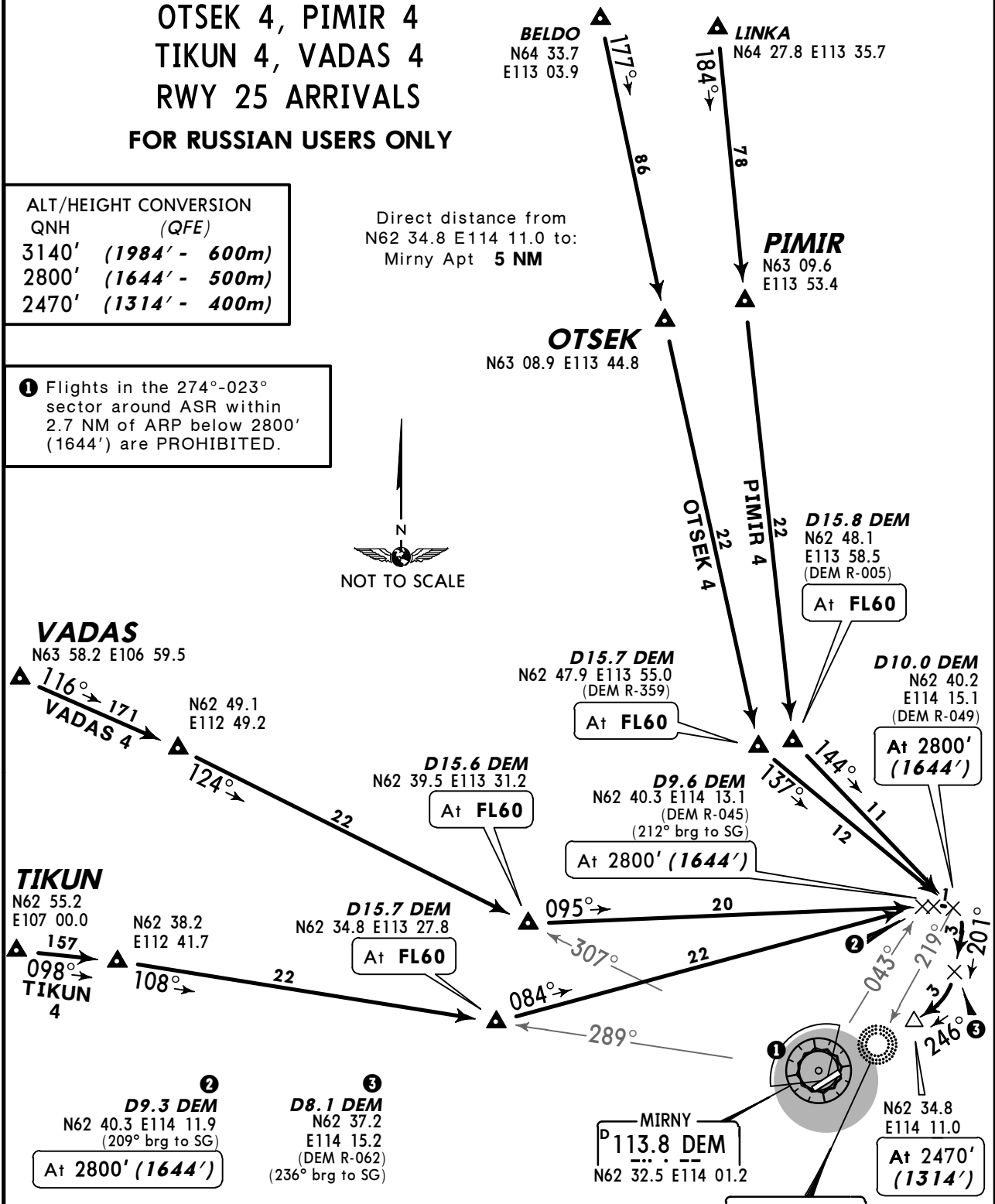
| | | |
|--------------------------------------|--|---|
| ATIS 126.6 Russian only | Alt Set: MM (hPa on request) QNH on req (QFE) Trans level: FL50 FL60 if pressure is less than 728 mm (960.6 hPa) and 701 mm (934.6 hPa) or above FL70 if pressure is less than 701 mm (934.6 hPa) Trans alt (hgt): 3140' (1984') |  3000' MSA ARP |
| Apt Elev 1162' | Straight in approach available only under continuous RADAR control and receiving VORDME signals. Without continuous RADAR control proceed to SG at TL, then descend to 2800' (1644') according to approach chart. | |

**OTSEK 4, PIMIR 4
TIKUN 4, VADAS 4
RWY 25 ARRIVALS
FOR RUSSIAN USERS ONLY**

| ALT/HEIGHT CONVERSION | |
|-----------------------|----------------|
| QNH | (QFE) |
| 3140' | (1984' - 600m) |
| 2800' | (1644' - 500m) |
| 2470' | (1314' - 400m) |

① Flights in the 274°-023° sector around ASR within 2.7 NM of ARP below 2800' (1644') are PROHIBITED.

Direct distance from N62 34.8 E114 11.0 to:
Mirny Apt 5 NM



| Arrival Data for ACFT with MAX 160KT | | | | |
|--------------------------------------|-------|------|---------|---------------|
| From | Track | Dist | QDM LOM | Alt (Hgt) |
| N62 34.8 E113 27.8 | 092° | 20.8 | 209° | 2800' (1644') |
| N62 39.5 E113 31.2 | 105° | 18.9 | 209° | 2800' (1644') |
| N62 47.9 E113 55.0 | 150° | 13.8 | 224° | 2800' (1644') |
| N62 48.1 E113 58.5 | 167° | 12.6 | 223° | 2800' (1644') |

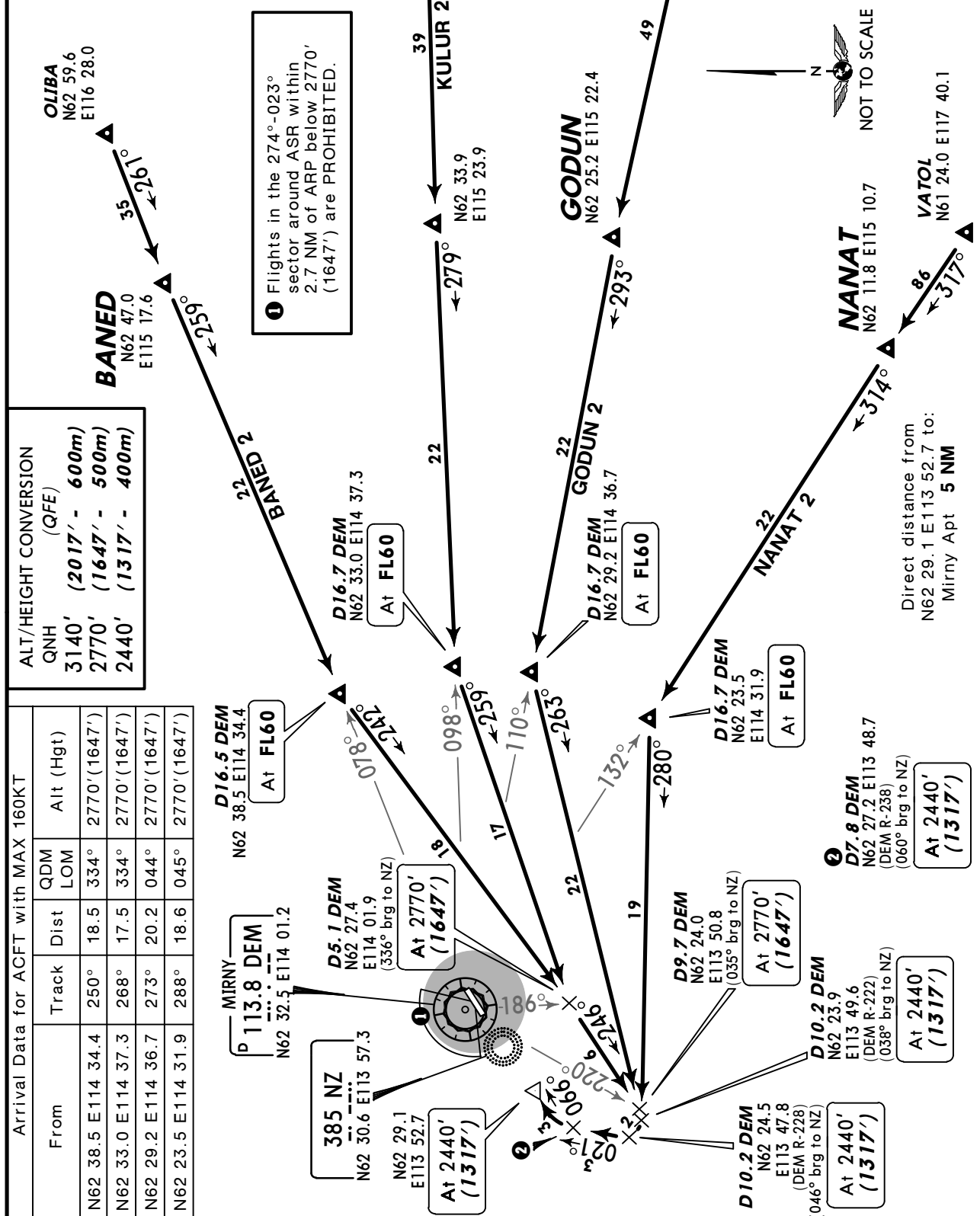
ATIS
126.6
Russian only

Alt Set: MM (hPa on request) QNH on req **(QFE)**
Trans level: FL50
FL60 if pressure is less than 728 mm (960.6 hPa) & 701 mm (934.6 hPa) or above
FL70 if pressure is less than 701 mm (934.6 hPa)

Apt Elev
1162'

Trans alt (hgt): 3140' **(2017')**
Straight in approach available only under continuous RADAR control and receiving VORDME signals. Without continuous RADAR control proceed to NZ at TL, then descend to 2770' (1647') according to approach chart.

**BANED 2, GODUN 2
KULUR 2, NANAT 2
RWY 07 ARRIVALS
FOR RUSSIAN USERS ONLY**



ALT/HEIGHT CONVERSION (QFE)

| | | |
|-----|-------|----------------|
| QNH | 3140' | (2017' - 600m) |
| | 2770' | (1647' - 500m) |
| | 2440' | (1317' - 400m) |

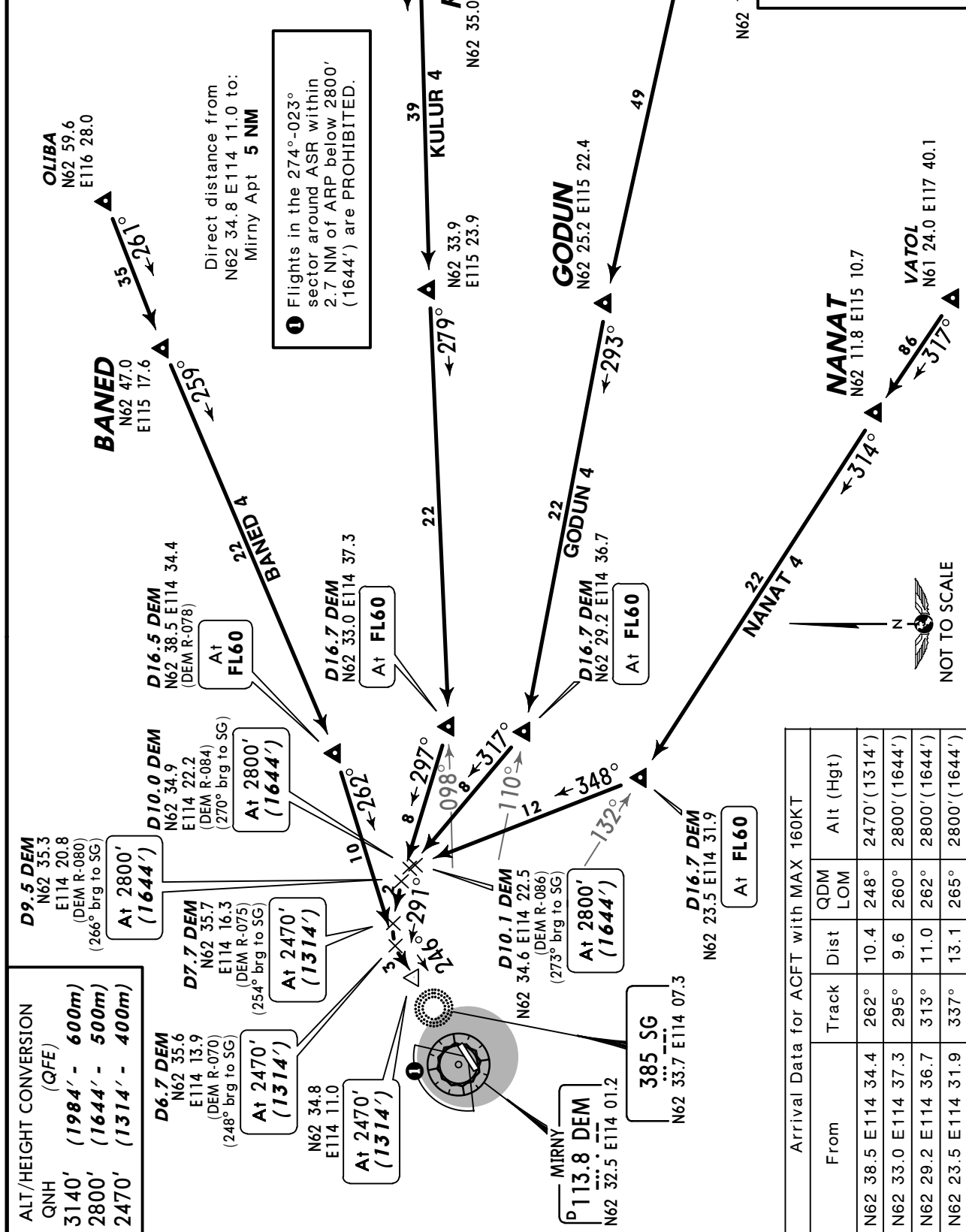
Arrival Data for ACFT with MAX 160KT

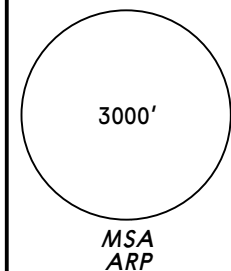
| From | Track | Dist | QDM LOM | Alt (Hgt) |
|--------------------|-------|------|---------|---------------|
| N62 38.5 E114 34.4 | 250° | 18.5 | 334° | 2770' (1647') |
| N62 33.0 E114 37.3 | 268° | 17.5 | 334° | 2770' (1647') |
| N62 29.2 E114 36.7 | 273° | 20.2 | 044° | 2770' (1647') |
| N62 23.5 E114 31.9 | 288° | 18.6 | 045° | 2770' (1647') |

CHANGES: Crossing at D9.9 DEM replaced by D10.2 DEM.

| | |
|--------------------------------------|---|
| ATIS 126.6 Russian only | Alt Set: MM (hPa on request) QNH on req (QFE) Trans level: FL50 FL60 if pressure is less than 728 mm (960.6 hPa) & 701 mm (934.6 hPa) or above FL70 if pressure is less than 701 mm (934.6 hPa) |
| Apt Elev 1162' | Trans alt (hgt): 3140' (1984') Straight in approach available only under continuous RADAR control and receiving VORDME signals. Without continuous RADAR control proceed to SG at TL, then descend to 2800' (1644') according to approach chart. |

**BANED 4, GODUN 4
KULUR 4, NANAT 4
RWY 25 ARRIVALS
FOR RUSSIAN USERS ONLY**



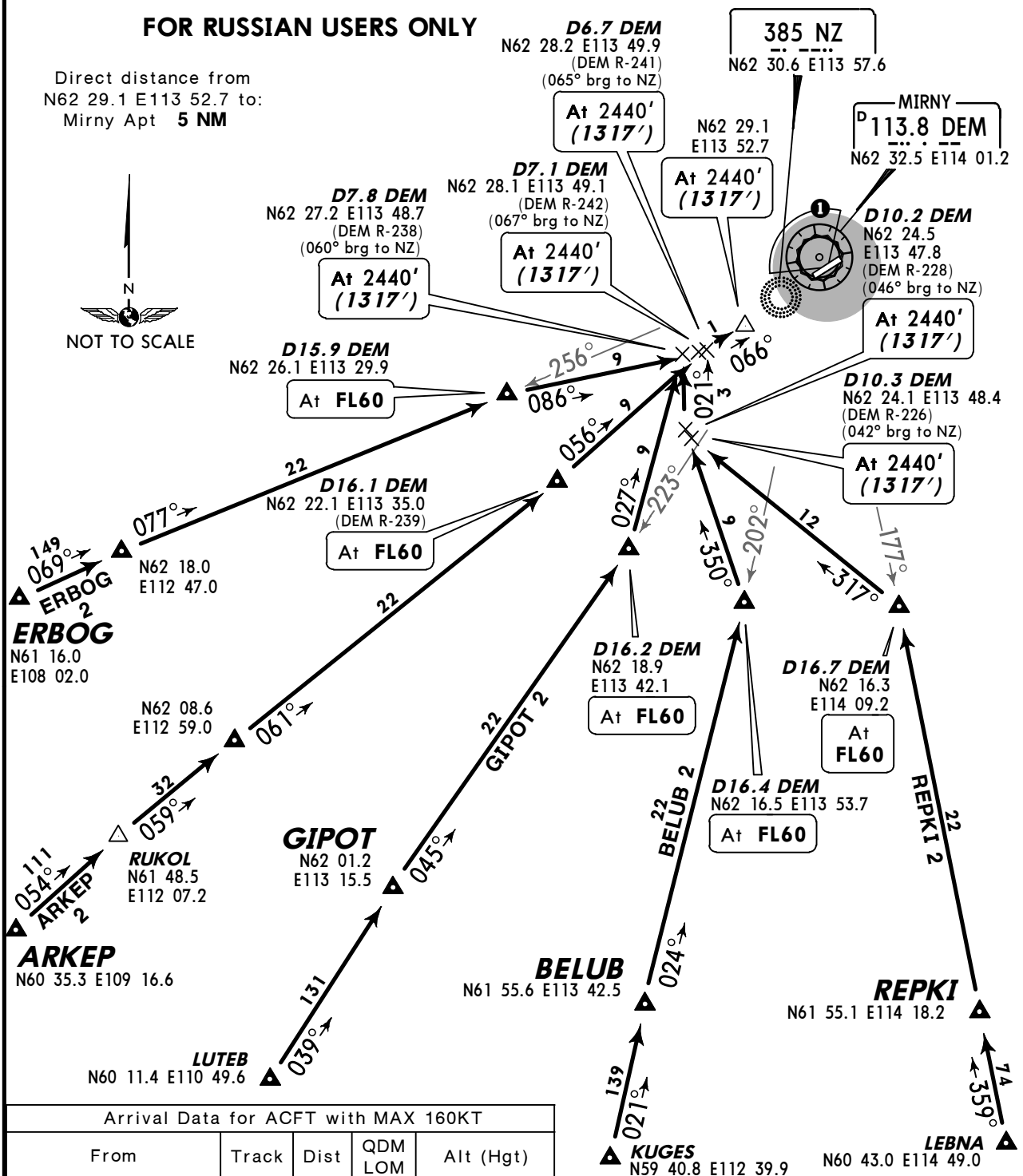
| | | |
|--------------------------------------|---|--|
| ATIS 126.6 Russian only | Alt Set: MM (hPa on request) QNH on req (QFE) Trans level: FL50 FL60 if pressure is less than 728 mm (960.6 hPa) and 701 mm (934.6 hPa) or above FL70 if pressure is less than 701 mm (934.6 hPa) Trans alt (hgt): 3140' (2017') Straight in approach available only under continuous RADAR control and receiving VORDME signals. Without continuous RADAR control proceed to NZ at TL, then descend to 2770' (1647') according to approach chart. |  <p>3000' MSA ARP</p> |
| Apt Elev 1162' | | |

**ARKEP 2, BELUB 2, ERBOG 2
GIPOT 2, REPKI 2
RWY 07 ARRIVALS**

FOR RUSSIAN USERS ONLY

Direct distance from
N62 29.1 E113 52.7 to:
Mirny Apt **5 NM**

① Flights in the 274°-023° sector around ASR within 2.7 NM of ARP below 2770' (1647') are PROHIBITED.

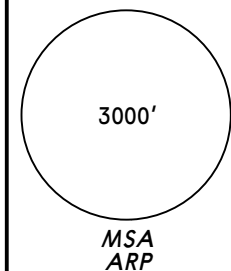


Arrival Data for ACFT with MAX 160KT

| From | Track | Dist | QDM LOM | Alt (Hgt) |
|--------------------|-------|------|---------|--------------|
| N62 16.3 E114 09.2 | 328° | 13.2 | 047° | 2440'(1317') |
| N62 16.5 E113 53.7 | 354° | 9.6 | 047° | 2440'(1317') |
| N62 18.9 E113 42.1 | 033° | 10.6 | 063° | 2440'(1317') |
| N62 22.1 E113 35.0 | 059° | 10.0 | 065° | 2440'(1317') |
| N62 26.1 E113 29.9 | 084° | 10.0 | 066° | 2440'(1317') |

ALT/HEIGHT CONVERSION
QNH (QFE)

| | |
|-------|----------------|
| 3140' | (2017' - 600m) |
| 2770' | (1647' - 500m) |
| 2440' | (1317' - 400m) |

| | | |
|--------------------------------------|---|--|
| ATIS 126.6 Russian only | Alt Set: MM (hPa on request) QNH on req (QFE) Trans level: FL50 FL60 if pressure is less than 728 mm (960.6 hPa) and 701 mm (934.6 hPa) or above FL70 if pressure is less than 701 mm (934.6 hPa) Trans alt (hgt): 3140' (1984') Straight in approach available only under continuous RADAR control and receiving VORDME signals. Without continuous RADAR control proceed to SG at TL, then descend to 2800' (1644') according to approach chart. |  <p>3000' MSA ARP</p> |
| Apt Elev 1162' | | |

**ARKEP 4, BELUB 4, ERBOG 4
GIPT 4, REPKI 4
RWY 25 ARRIVALS
FOR RUSSIAN USERS ONLY**

1 Flights in the 274°-023° sector around ASR within 2.7 NM of ARP below 2800' (1644') are PROHIBITED.

2 **D9.5 DEM**
N62 35.3
E114 20.8
(DEM R-080)
(266° brg to SG)
At 2800' (1644')

Direct distance from N62 34.8 E114 11.0 to:
Mirny Apt **5 NM**

3 **D9.9 DEM**
N62 34.0
E114 22.4
(DEM R-089)
(278° brg to SG)
At 2800' (1644')

D15.9 DEM
N62 26.1 E113 29.9
At FL60

ERBOG 4
N61 16.0
E108 02.0

D16.1 DEM
N62 22.1 E113 35.0
At FL60

ARKEP 4
N60 35.3 E109 16.6

RUKOL
N61 48.5
E112 07.2

GIPT 4
N62 01.2
E113 15.5

BELUB 4
N61 55.6 E113 42.5

LUTEB
N60 11.4 E110 49.6

KUGES
N59 40.8
E112 39.9



NOT TO SCALE

LEBNA
N60 43.0
E114 49.0

D6.7 DEM
N62 35.6
E114 13.9
(DEM R-070)
(248° brg to SG)

At 2470' (1314')

D7.7 DEM
N62 35.7
E114 16.3
(DEM R-075)
(254° brg to SG)

At 2470' (1314')

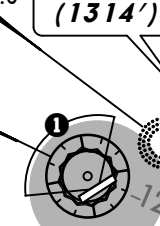
385 SG
N62 33.7 E114 07.6

At 2470' (1314')

D5.4 DEM
N62 30.3
E114 12.0
(336° brg to SG)

At 2800' (1644')

MIRNY 113.8 DEM
N62 32.5 E114 01.2



D9.5 DEM
N62 33.5
E114 21.6
(DEM R-093)
(282° brg to SG)

At 2800' (1644')

D16.7 DEM
N62 16.3
E114 09.2
At FL60

D16.4 DEM
N62 16.5 E113 53.7
At FL60

D16.2 DEM
N62 18.9
E113 42.1
At FL60

REPKI 4
N61 55.1 E114 18.2

Arrival Data for ACFT with MAX 160KT

| From | Track | Dist | QDM LOM | Alt (Hgt) |
|--------------------|-------|------|---------|--------------|
| N62 16.3 E114 09.2 | 019° | 18.2 | 268° | 2800'(1644') |
| N62 16.5 E113 53.7 | 040° | 20.4 | 276° | 2800'(1644') |
| N62 18.9 E113 42.1 | 053° | 18.5 | 340° | 2800'(1644') |
| N61 22.1 E113 35.0 | 069° | 19.2 | 345° | 2800'(1644') |
| N62 26.1 E113 29.9 | 068° | 22.5 | 344° | 2800'(1644') |

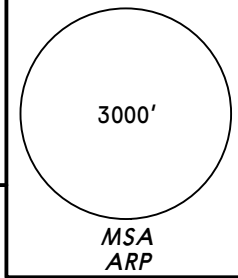
ALT/HEIGHT CONVERSION

QNH (QFE)

| | |
|-------|----------------|
| 3140' | (1984' - 600m) |
| 2800' | (1644' - 500m) |
| 2470' | (1314' - 400m) |

Apt Elev
1162'

QNH on request (QFE)
Trans level: FL50
FL60 if pressure is less than 728 mm (960.6 hPa)
and 701 mm (934.6 hPa) or above
FL70 if pressure is less than 701 mm (934.6 hPa)
Trans alt (hgt): 3140' (2017')

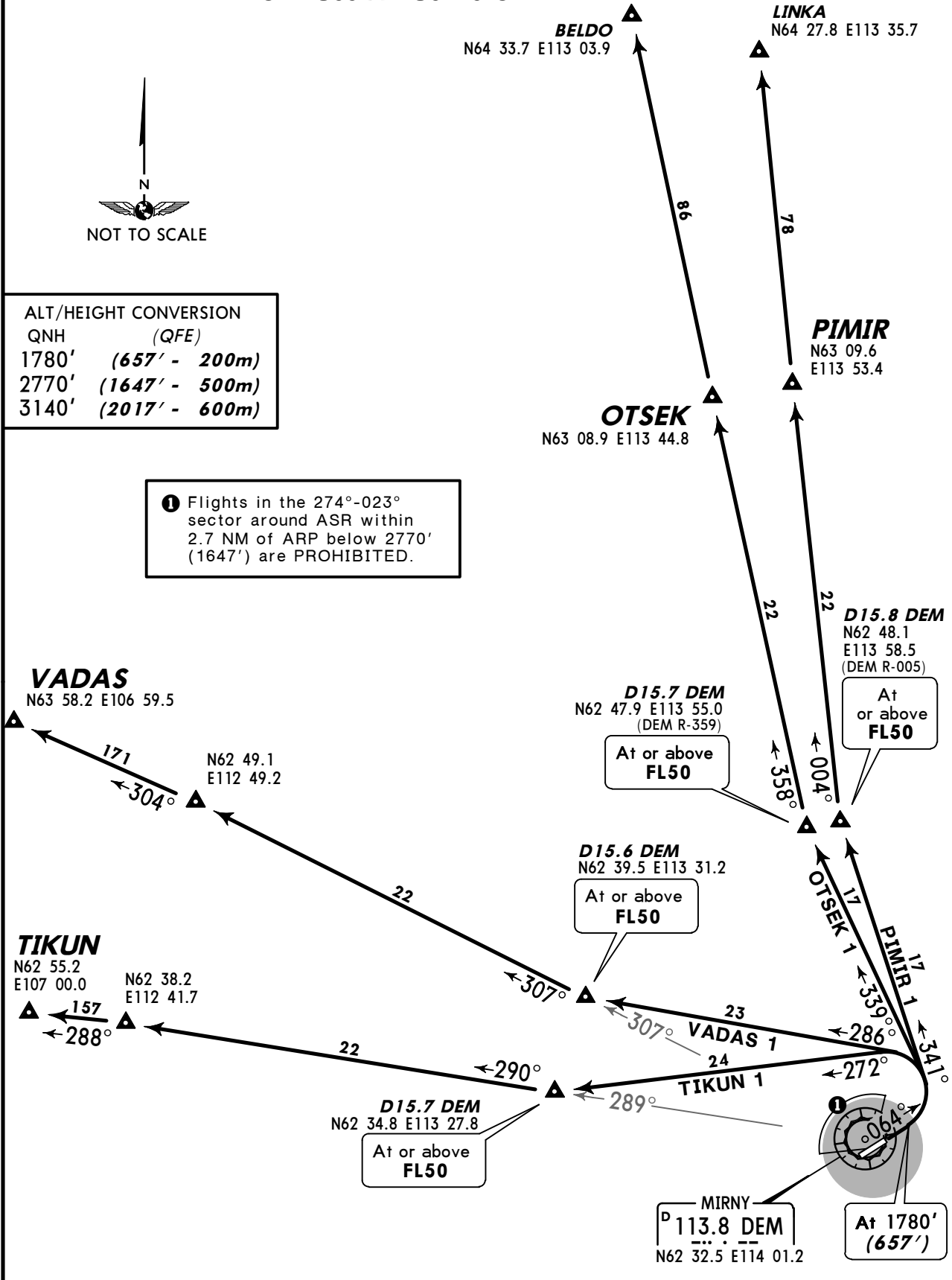


OTSEK 1, PIMIR 1
TIKUN 1, VADAS 1
RWY 07 DEPARTURES
FOR RUSSIAN USERS ONLY



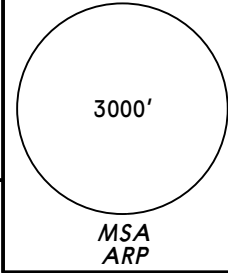
| ALT/HEIGHT CONVERSION | |
|-----------------------|----------------|
| QNH | (QFE) |
| 1780' | (657' - 200m) |
| 2770' | (1647' - 500m) |
| 3140' | (2017' - 600m) |

① Flights in the 274°-023° sector around ASR within 2.7 NM of ARP below 2770' (1647') are PROHIBITED.



Apt Elev
1162'

QNH on request (QFE)
Trans level: FL50
FL60 if pressure is less than 728 mm (960.6 hPa)
and 701 mm (934.6 hPa) or above
FL70 if pressure is less than 701 mm (934.6 hPa)
Trans alt (hgt): 3140' (1984')

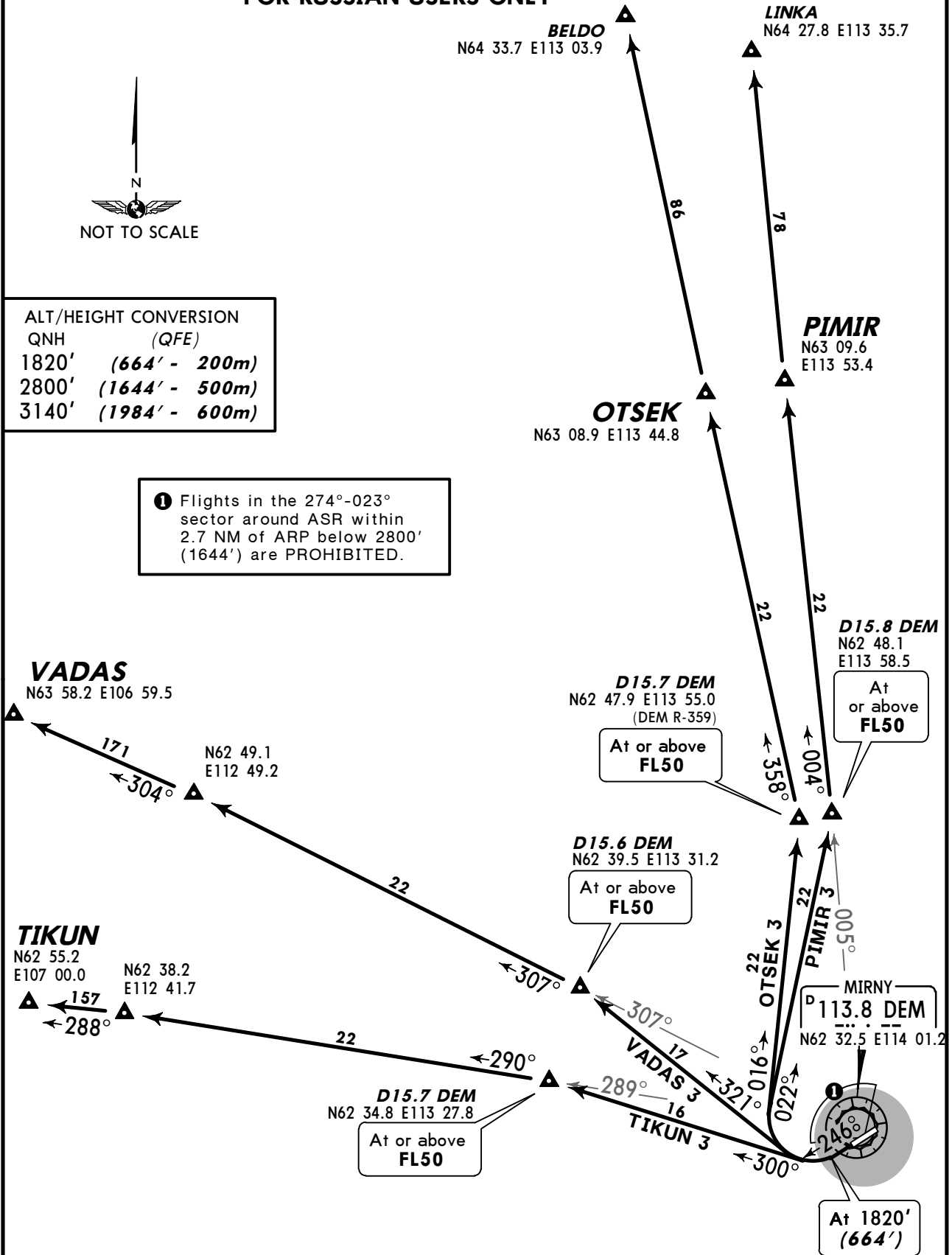


OTSEK 3, PIMIR 3
TIKUN 3, VADAS 3
RWY 25 DEPARTURES
FOR RUSSIAN USERS ONLY



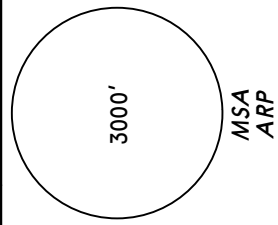
| ALT/HEIGHT CONVERSION | |
|-----------------------|----------------|
| QNH | (QFE) |
| 1820' | (664' - 200m) |
| 2800' | (1644' - 500m) |
| 3140' | (1984' - 600m) |

① Flights in the 274°-023° sector around ASR within 2.7 NM of ARP below 2800' (1644') are PROHIBITED.

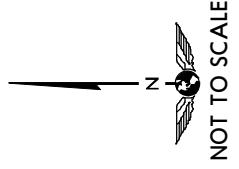
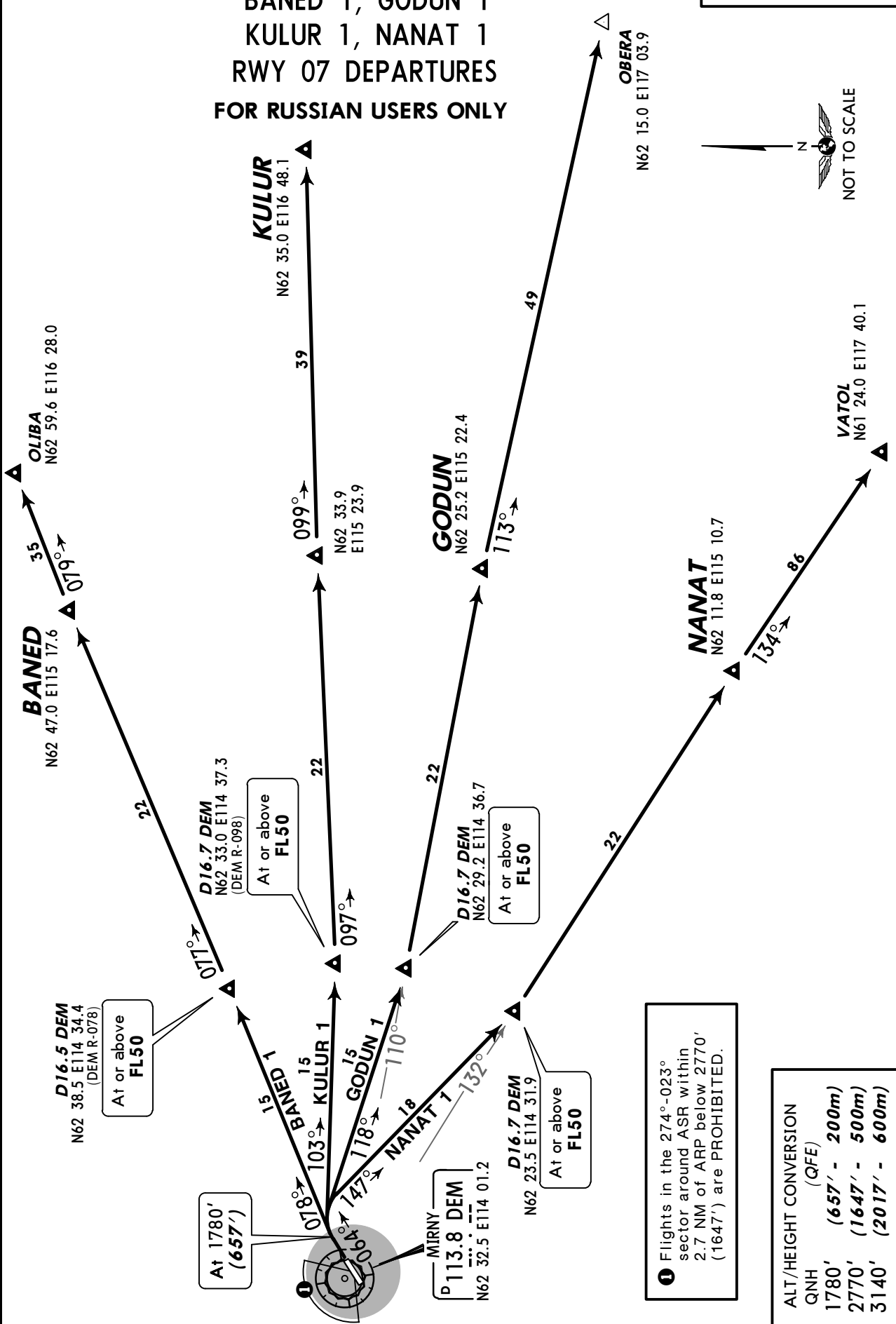


Apt Elev
1162'

QNH on request (QFE)
Trans level: FL50
FL60 if pressure is less than 728 mm (960.6 hPa)
and 701 mm (934.6 hPa) or above
FL70 if pressure is less than 701 mm (934.6 hPa)
Trans alt (hgt): 3140' (2017')



**BANED 1, GODUN 1
KULUR 1, NANAT 1
RWY 07 DEPARTURES
FOR RUSSIAN USERS ONLY**

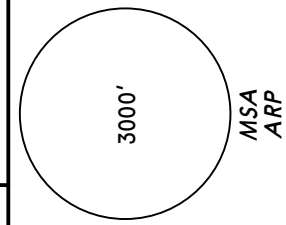


1 Flights in the 274°-023° sector around ASR within 2.7 NM of ARP below 2770' (1647') are PROHIBITED.

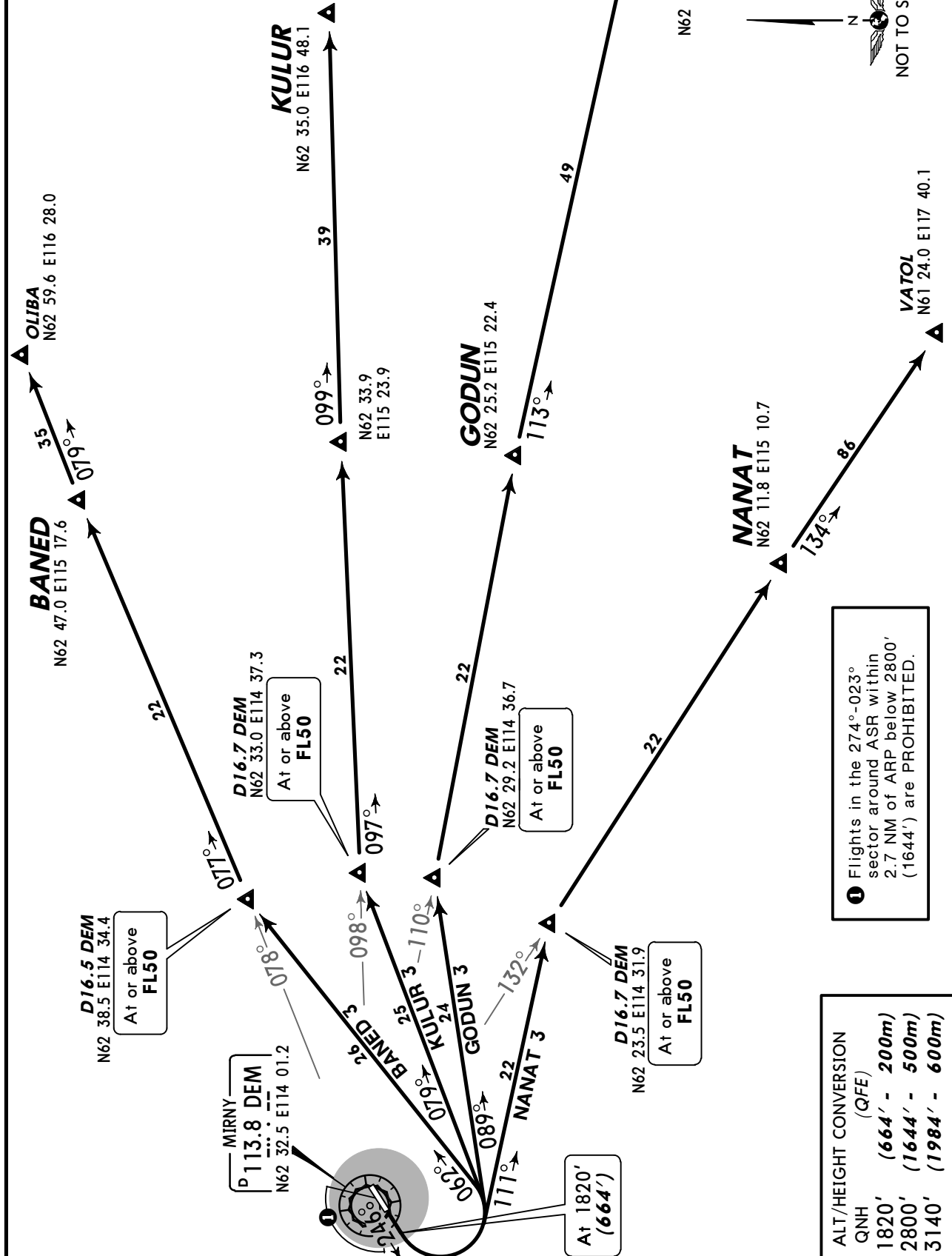
| ALT/HEIGHT CONVERSION | |
|-----------------------|----------------|
| QNH (QFE) | |
| 1780' | (657' - 200m) |
| 2770' | (1647' - 500m) |
| 3140' | (2017' - 600m) |

Apt Elev 1162'

QNH on request (QFE)
Trans level: FL50
FL60 if pressure is less than 728 mm (960.6 hPa) and 701 mm (934.6 hPa) or above
FL70 if pressure is less than 701 mm (934.6 hPa)
Trans alt (hgt): 3140' (1984')

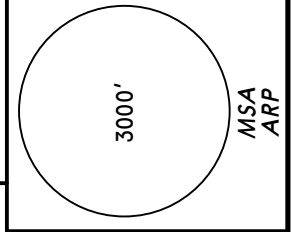


**BANED 3, GODUN 3
KULUR 3, NANAT 3
RWY 25 DEPARTURES
FOR RUSSIAN USERS ONLY**

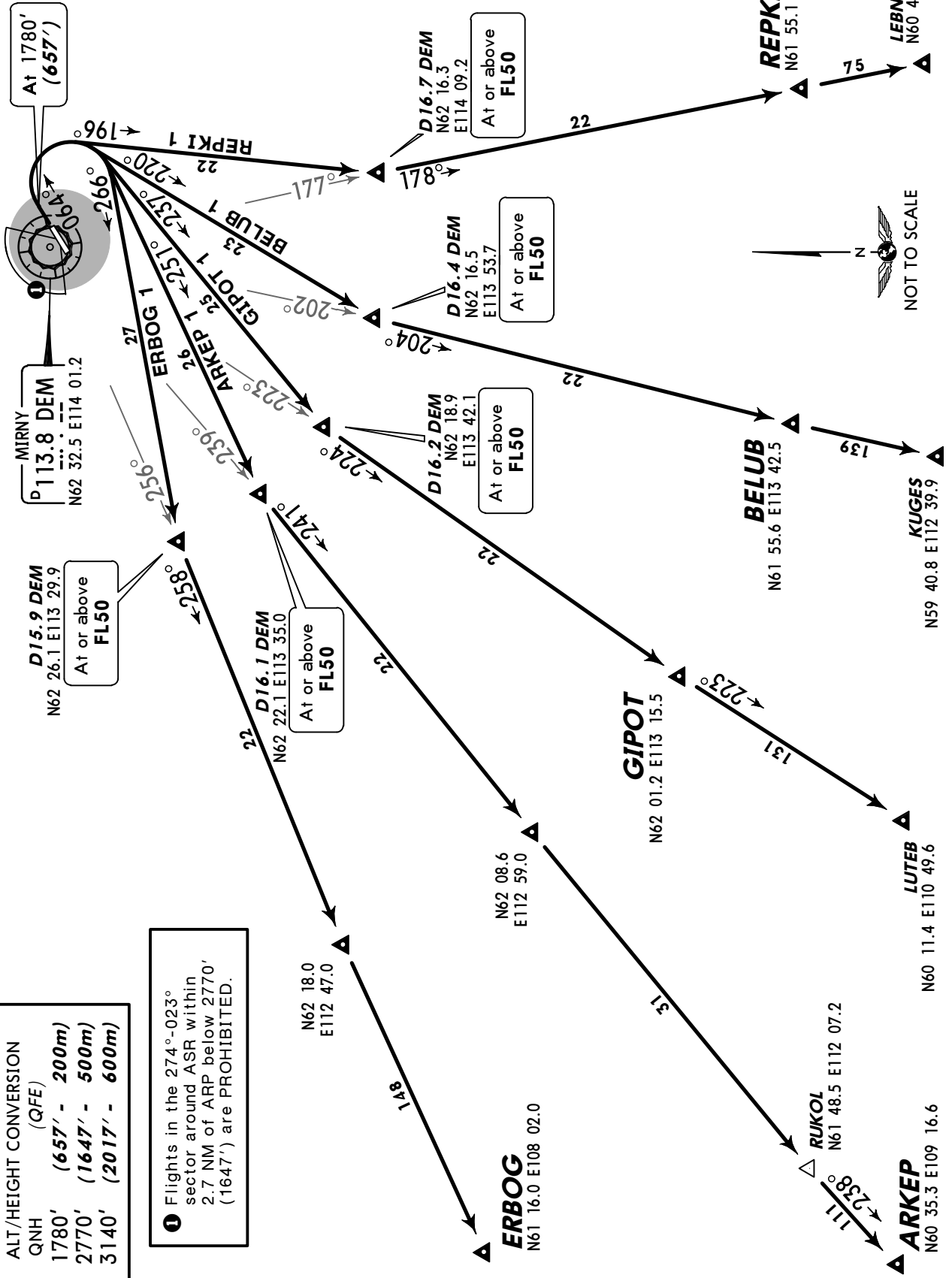


Apt Elev
1162'

QNH on request (QFE)
Trans level: FL50
FL60 if pressure is less than 728 mm (960.6 hPa)
and 701 mm (934.6 hPa) or above
FL70 if pressure is less than 701 mm (934.6 hPa)
Trans alt (hgt): 3140' (2017')



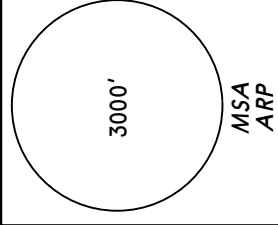
ARKEP 1, BELUB 1, ERBOG 1 GIPOT 1, REPKI 1 RWY 07 DEPARTURES FOR RUSSIAN USERS ONLY



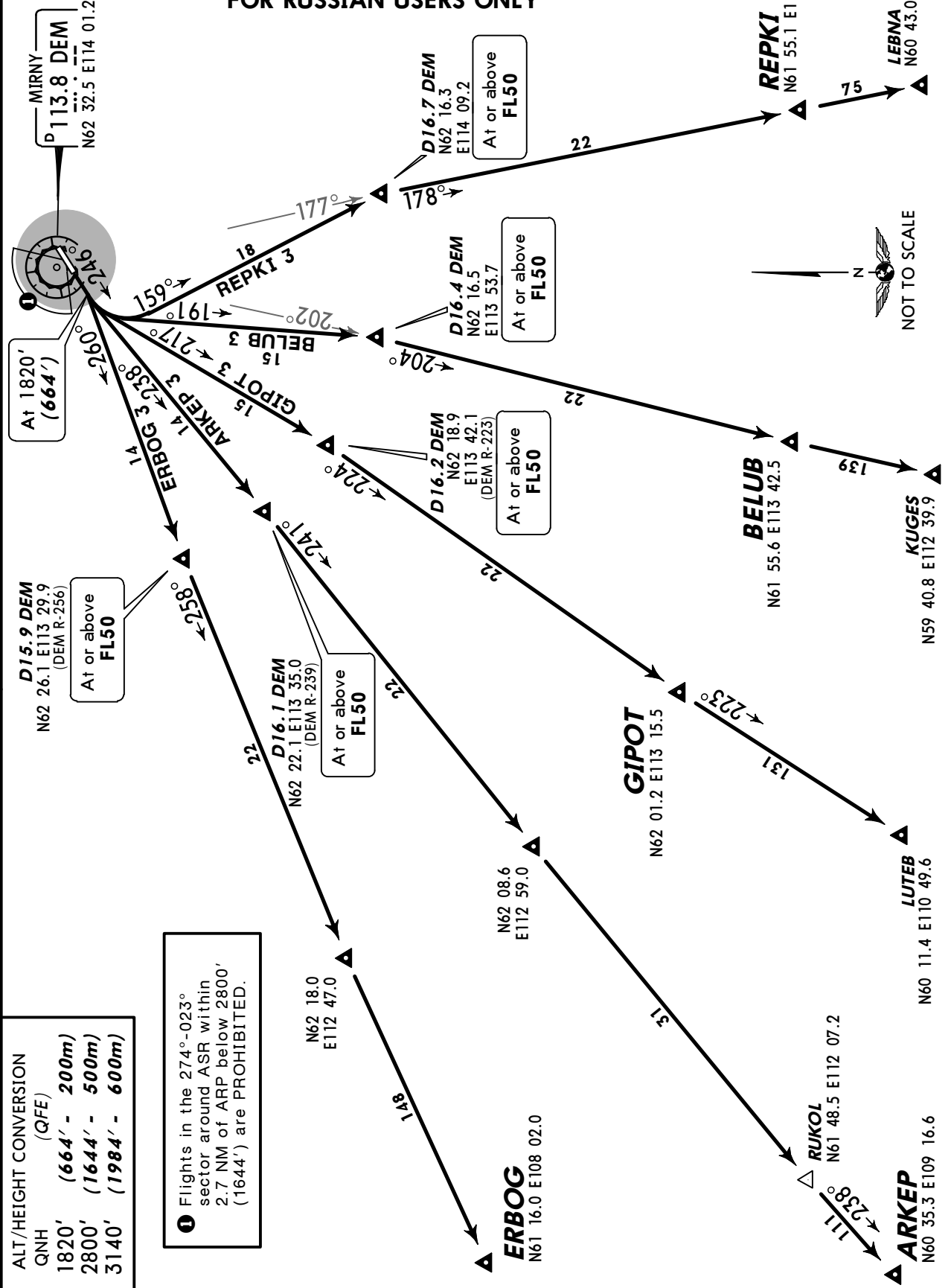
| ALT/HEIGHT CONVERSION (QFE) | |
|--------------------------------|----------------|
| 1780' | (657' - 200m) |
| 2770' | (1647' - 500m) |
| 3140' | (2017' - 600m) |

1 Flights in the 274°-023° sector around ASR within 2.7 NM of ARP below 2770' (1647') are PROHIBITED.

Apt Elev 1162'
QNH on request (QFE)
Trans level: FL50
FL60 if pressure is less than 728 mm (960.6 hPa) and 701 mm (934.6 hPa) or above
FL70 if pressure is less than 701 mm (934.6 hPa)
Trans alt (hgt): 3140' (1984')



ARKEP 3, BELUB 3, ERBOG 3
GIPOT 3, REPKI 3
RWY 25 DEPARTURES
FOR RUSSIAN USERS ONLY



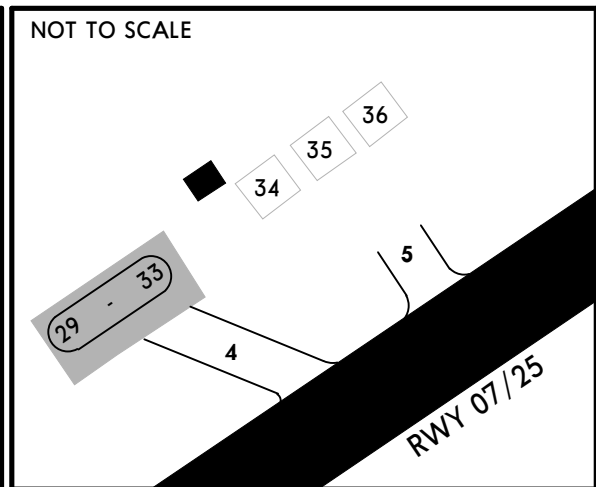
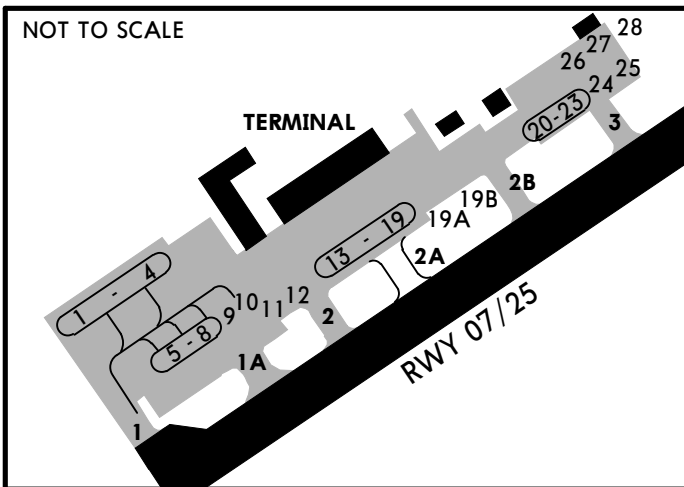
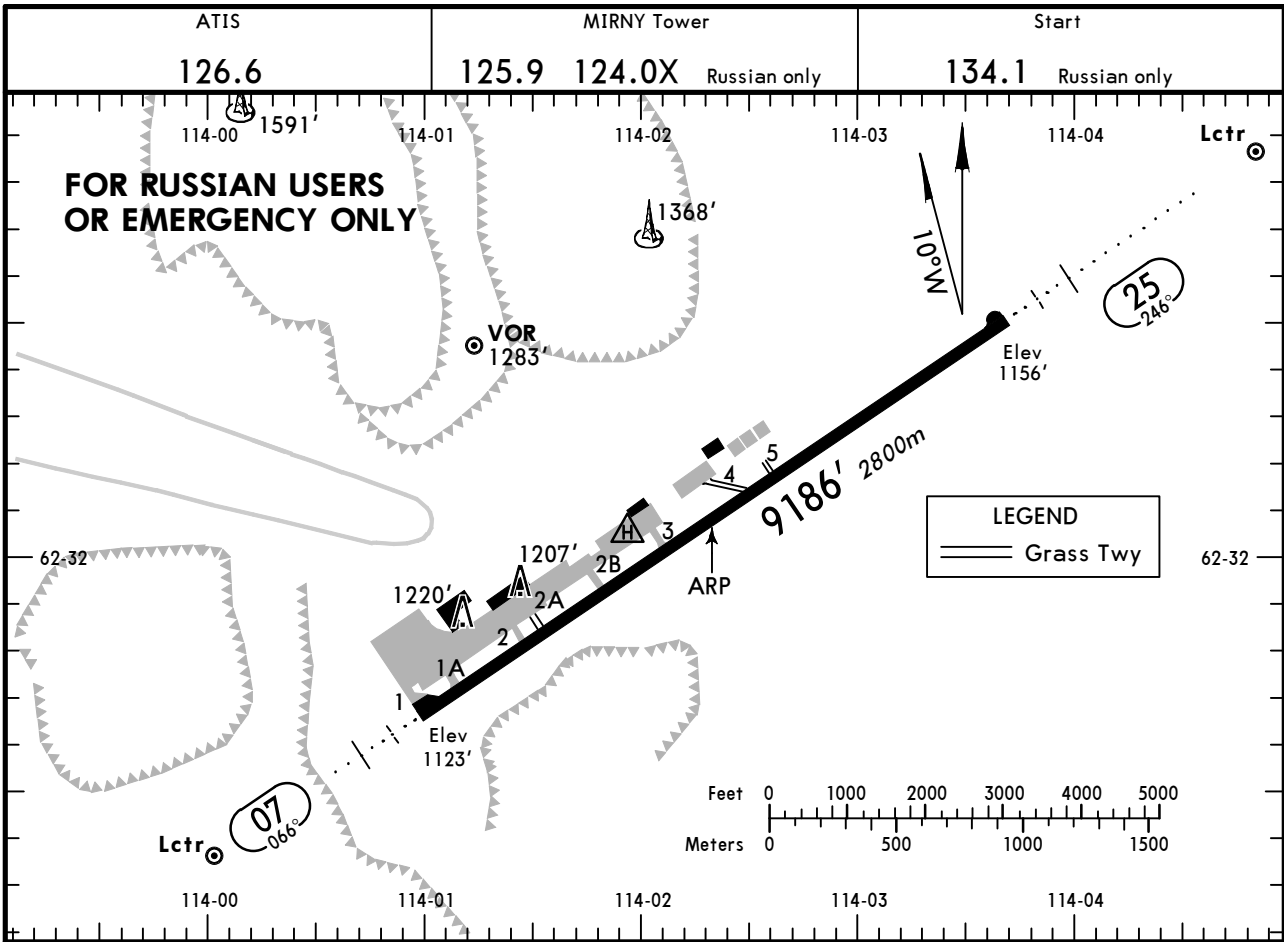
ALT/HEIGHT CONVERSION (QFE)

| | |
|-------|----------------|
| QNH | 1820' |
| 1820' | (664' - 200m) |
| 2800' | (1644' - 500m) |
| 3140' | (1984' - 600m) |

Flights in the 274°-023° sector around ASR within 2.7 NM of ARP below 2800' (1644') are PROHIBITED.

CHANGES: SIDs completely revised.

© JEPPESEN, 2011. ALL RIGHTS RESERVED.



Taxiing shall be carried out at minimum speed strictly along twy centerline.
 Stands 20 thru 29 and 34 thru 36 available for helicopters.

ADDITIONAL RUNWAY INFORMATION

| RWY | HIRL (60m) ALS | PAPI-R (angle 2.67°) | USABLE LENGTHS | | TAKE-OFF | WIDTH |
|-----|----------------|--------------------------|----------------|-------------|---------------|-------------|
| | | | Threshold | Glide Slope | | |
| 07 | HIRL (60m) ALS | PAPI-R (angle 2.67°) | | | 8858' 2700m ① | 148' 45m |
| 25 | HIRL (60m) ALS | TDZ PAPI-L (angle 3.00°) | | 7910' 2411m | | |

① First 328'/100m unusable for take-off.

TAKE-OFF
 AIR CARRIER (JAA)
 All Rwys

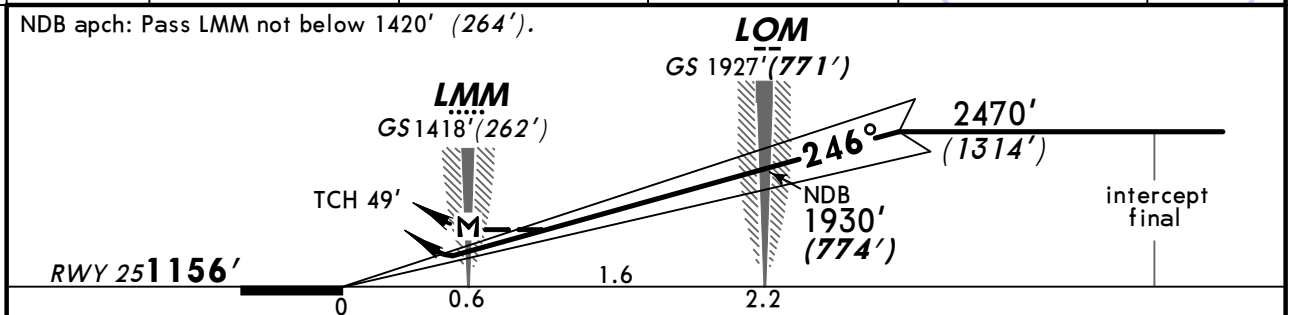
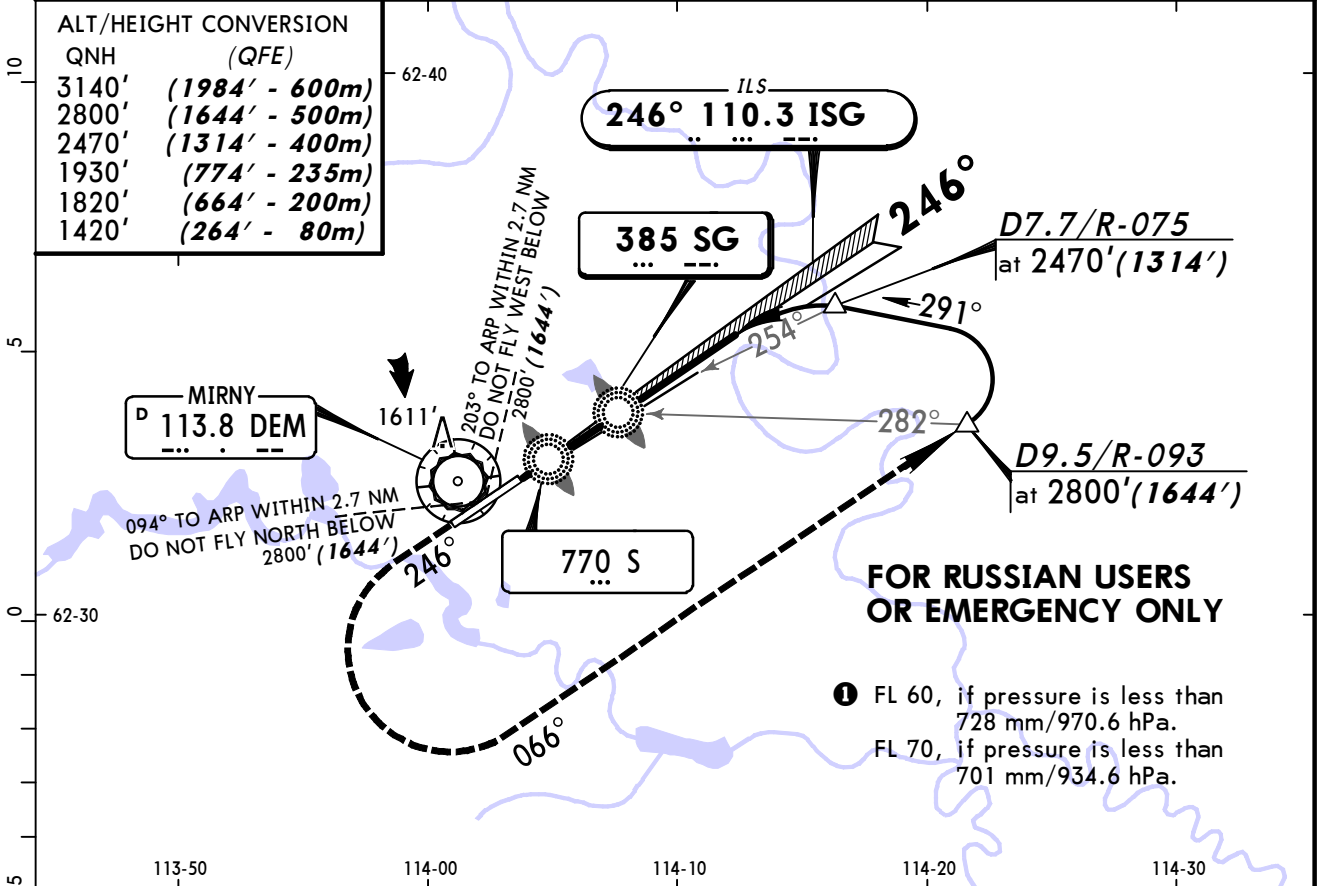
| | LVP must be in force RCLM (DAY only) or RL | RCLM (DAY only) or RL |
|---|--|--------------------------|
| A | | |
| B | 250m | 400m |
| C | | |
| D | 300m | |

| STRAIGHT-IN RWY | | A | B | C | D |
|-----------------|----------------|-------------------------|-------------------------|-------------------------|-------------------------|
| 07 | NDB | 1780' (657') | 1780' (657') | 2110' (987') | 2110' (987') |
| | <i>ALS out</i> | C3000m C3200m | C3000m C3200m | C4700m C4900m | C4700m C4900m |
| 25 | ILS | 1385' (229') | 1385' (229') | 1385' (229') | 1385' (229') |
| | <i>ALS out</i> | R1000m R1200m | R1000m R1200m | R1000m R1200m | R1000m R1200m |
| | LOC | NOT AUTH | NOT AUTH | NOT AUTH | NOT AUTH |
| | NDB | 1820' (664') | 1820' (664') | 2140' (984') | 2140' (984') |
| | <i>ALS out</i> | C3100m C3300m | C3100m C3300m | C4700m C4900m | C4700m C4900m |

| TAKE-OFF RWY 07, 25 | | |
|---------------------|--------------------------|--------------------------|
| | LVP must be in Force | |
| | RCLM (DAY only) or RL | RCLM (DAY only) or RL |
| A | | NIL (DAY only) |
| B | 250m | 400m |
| C | | |
| D | 300m | |

| | | | | | | | |
|--|----------------------------------|--|--|--|--|--|------------|
| ATIS 126.6 | | MIRNY Tower Russian only 125.9 124.0X | | MIRNY Landing (TWR) 134.1 Russian only | | MIRNY Start (TWR) 134.1 Russian only | |
| BRIEFING STRIP™ LOC ISG 110.3 | Final Apch Crs 246° | GS LOM 1927' (771') | | ILS DA(H) 1385' (229') | | Apt Elev 1162' | |
| | | Minimum Alt LOM 1930' (774') | | NDB MDA(H) Refer to Minimums | | RWY 1156' | |
| NDB SG 385 | | | | | | 3000' | |
| MISSED APCH: Climb on 246° to 1820' (664'), then turn LEFT onto 066° climbing to 2800' (1644'), then according to chart. | | | | | | | MSA ARP |
| Alt Set: MM (hPa on req) | | QNH on req (QFE) | | Trans level: FL 50 ① | | Trans alt: 3140' (1984') | |

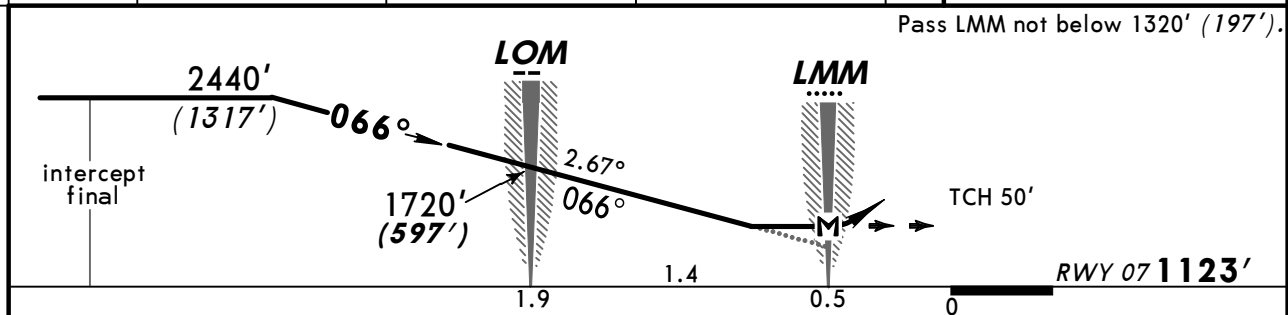
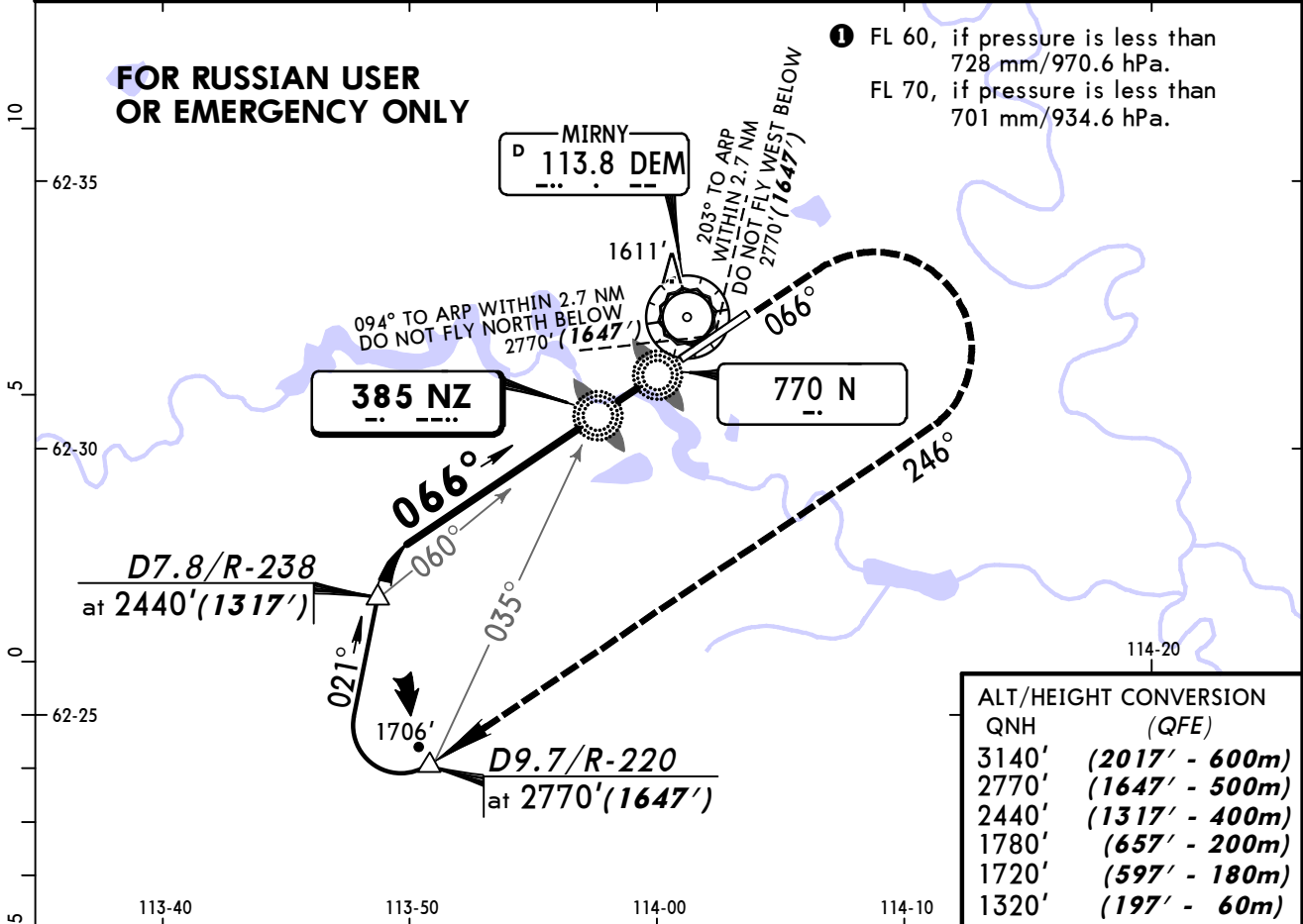
| ALT/HEIGHT CONVERSION | |
|-----------------------|----------------|
| QNH | (QFE) |
| 3140' | (1984' - 600m) |
| 2800' | (1644' - 500m) |
| 2470' | (1314' - 400m) |
| 1930' | (774' - 235m) |
| 1820' | (664' - 200m) |
| 1420' | (264' - 80m) |



| | | | | | | | | | | | | |
|----------------|-------|-----|-----|-----|-----|-----|------|-----------------|------|------|---------------|--|
| Gnd speed-Kts | 70 | 90 | 100 | 120 | 140 | 160 | ALS | 1820' (664') on | 246° | 066° | 2800' (1644') | |
| ILS GS or | 372 | 478 | 531 | 637 | 743 | 849 | PAPI | ↑ | ← | ← | ↑ | |
| NDB Desc angle | 3.00° | | | | | | | | | | | |
| MAP at LMM | | | | | | | | | | | | |

| | | | | | |
|---------------------------|---------|--|--|---|--|
| ILS | | STRAIGHT-IN LANDING RWY 25 LOC (GS out) | | NDB | |
| DA(H) 1385' (229') | | | | MBA(H) AB: 1820' (664') CD: 2140' (984') | |
| FULL | ALS out | | | ALS out | |
| A | | | | 1600m | |
| B | | | | | |
| C | 1200m | NOT AUTHORIZED | | 4800m | |
| D | | | | | |

| | | | | | | | |
|---|----------------------------------|---|--------------------------------|---|-----------|---|-------|
| ATIS 126.6 | | MIRNY Tower Russian only 125.9 124.0X | | MIRNY Landing (TWR) 134.1 Russian only | | MIRNY Start (TWR) 134.1 Russian only | |
| NDB NZ 385 | Final Apch Crs 066° | Minimum Alt LOM 1720' (597') | MDA(H) Refer to Minimums | Apt Elev 1162' | RWY 1123' | | |
| MISSED APCH: Climb on 066° to 1780' (657'), then turn RIGHT onto 246° climbing to 2770' (1647'), then according to chart. | | | | | | | 3000' |
| Alt Set: MM (hPa on req) Trans alt: 3140' (2017') | | QNH on req (QFE) | | Trans level: FL 50 ① | | MSA ARP | |



| | | | | | | | | | | | |
|---------------|-------|-----|-----|-----|-----|-----|------|-----------------|------|------|---------------|
| Gnd speed-Kts | 70 | 90 | 100 | 120 | 140 | 160 | ALS | 1780' (657') on | 066° | 246° | 2770' (1647') |
| Descent angle | 2.67° | 331 | 425 | 472 | 567 | 756 | PAPI | ↑ | RT | ↑ | |
| MAP at LMM | | | | | | | | | | | |

| | |
|----------------------------|--------------------------------------|
| STRAIGHT-IN LANDING RWY 07 | |
| MDA(H) | AB: 1780' (657') CD: 2110' (987') |
| ALS out | |

| | | | |
|----------|---|-------|--|
| PANS OPS | A | 1600m | |
| | B | | |
| | C | 4800m | |
| | D | | |

Chart changes since cycle 26-2013

ADD = added chart, REV = revised chart, DEL = deleted chart.

| ACT | PROCEDURE IDENT | INDEX | REV DATE | EFF DATE |
|-----|-----------------|-------|----------|----------|
|-----|-----------------|-------|----------|----------|

MIRNY, (MIRNY - UERR)

TERMINAL CHART CHANGE NOTICES

No Chart Change Notices for Airport UERR