

List of pages in this Trip Kit

Trip Kit Index

Airport Information For UGSB

Terminal Charts For UGSB

Revision Letter For Cycle 01-2014

Change Notices

Notebook

General Information

Location: Batumi GEO
IATA Code: BUS
Lat/Long: N41° 36.6' E041° 36.0'
Elevation: 108 ft

Airport Use: Public
Magnetic Variation: 6.2°E

Fuel Types: Jet A-1
Repair Types: Major Airframe, Major Engine
Customs: Yes
Airport Type: IFR
Landing Fee: Yes
Control Tower: Yes
Jet Start Unit: No
LLWS Alert: No
Beacon: Yes

Sunrise: 0441 Z
Sunset: 1358 Z,

Runway Information

Runway: 13
Length x Width: 8202 ft x 148 ft
Surface Type: asphalt
TDZ-Elev: 90 ft
Lighting: Edge, ALS, Centerline
Stopway: 197 ft

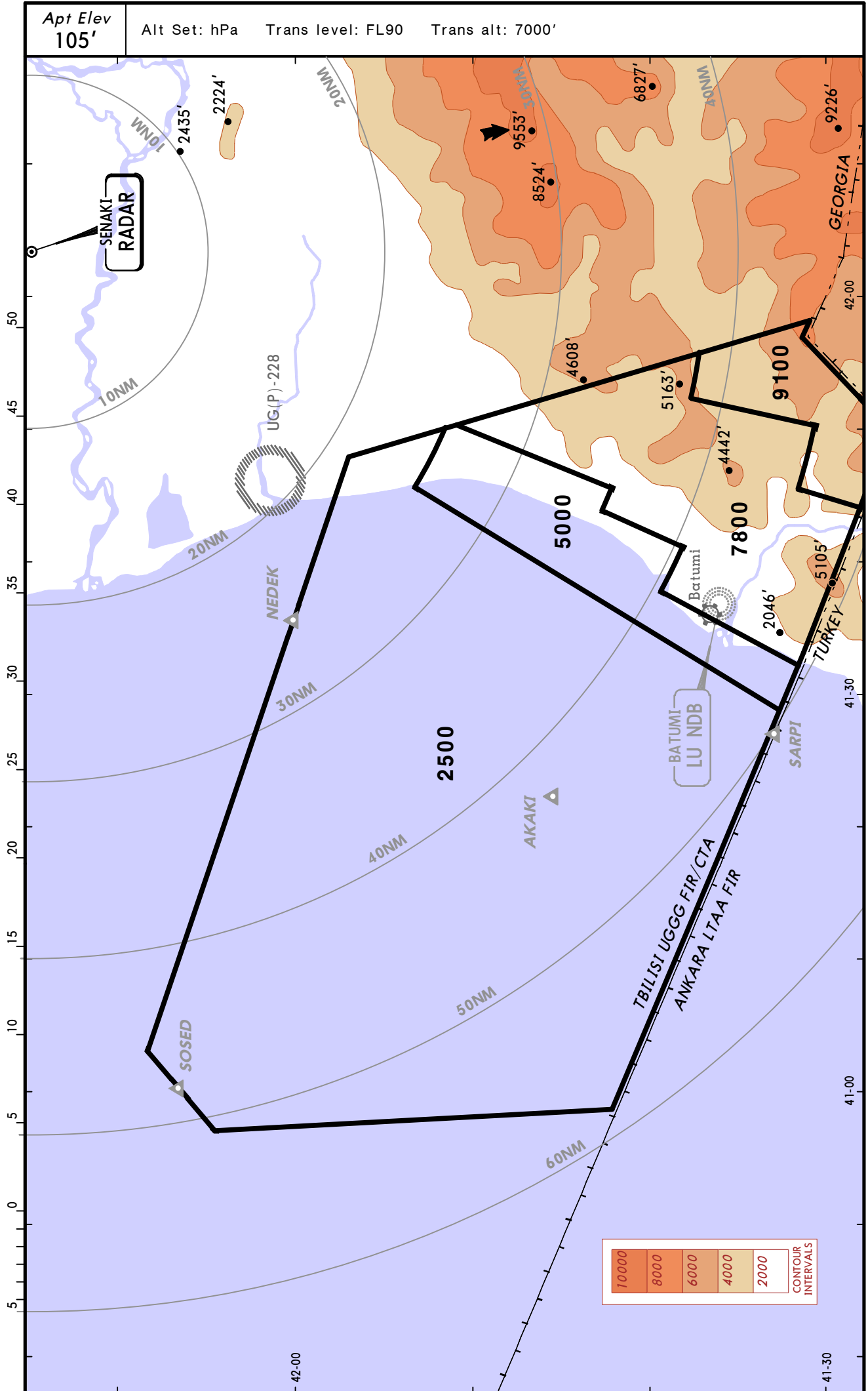
Runway: 31
Length x Width: 8202 ft x 148 ft
Surface Type: asphalt
TDZ-Elev: 108 ft
Lighting: Edge, Centerline
Stopway: 197 ft

Communication Information

Batumi Tower 118.6
Batumi Approach Control 124.425

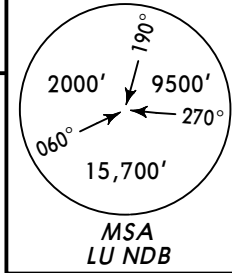
Apt Elev
105'

Alt Set: hPa Trans level: FL90 Trans alt: 7000'



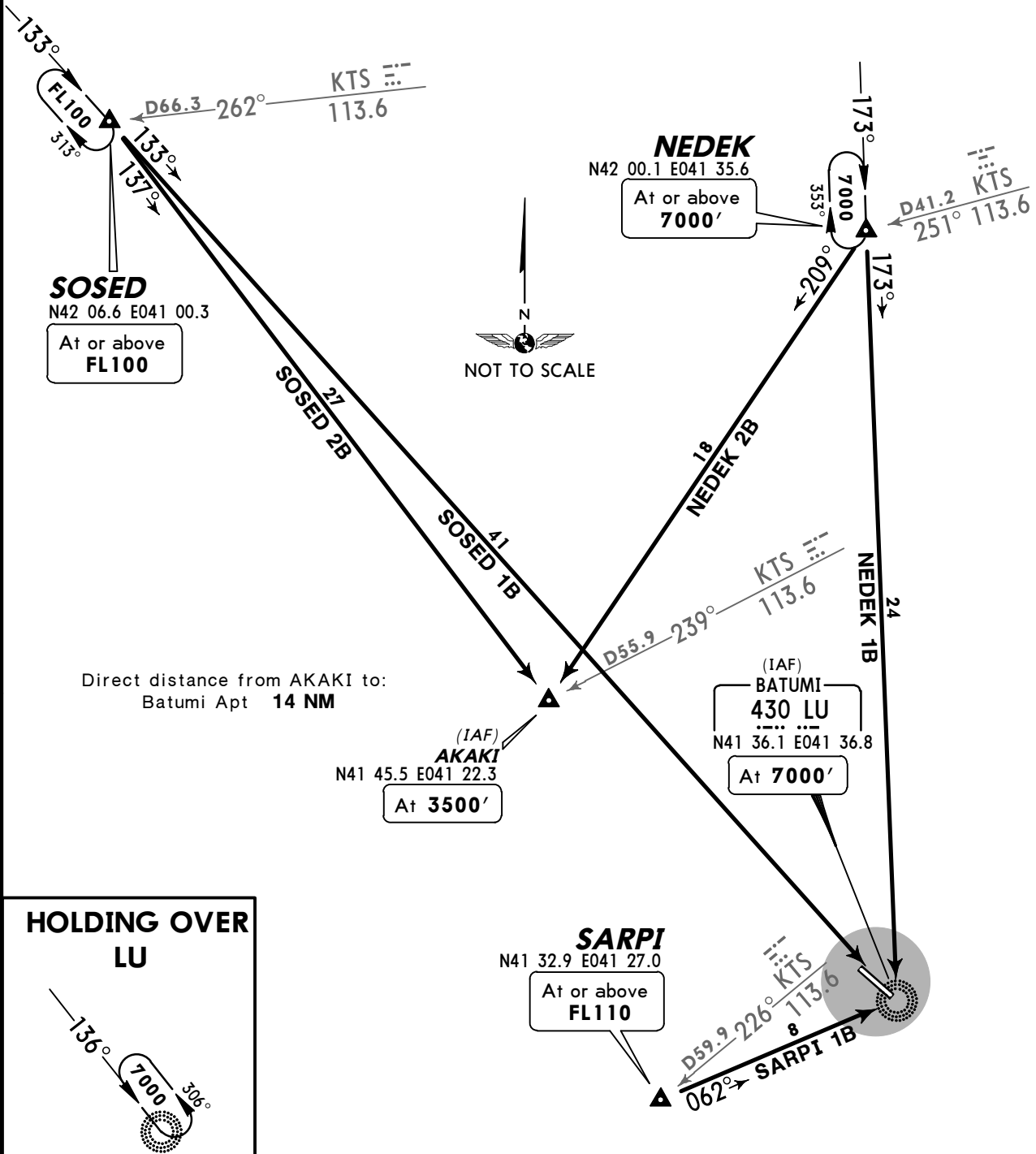
Apt Elev
108'

Alt Set: hPa Trans level: FL90 Trans alt: 7000'

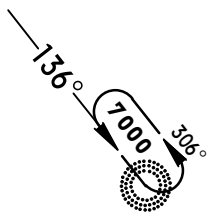


NEDEK ONE BRAVO (NEDEK 1B) [NEDE1B]
 NEDEK TWO BRAVO (NEDEK 2B) [NEDE2B]
 SARPI ONE BRAVO (SARPI 1B) [SARP1B]
 SOSED ONE BRAVO (SOSED 1B) [SOSE1B]
 SOSED TWO BRAVO (SOSED 2B) [SOSE2B]
 RWY 13 ARRIVALS

SPEED: MAX 250 KT BELOW FL110 WITHIN BATUMI TMA



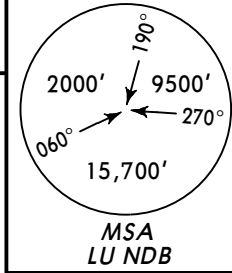
**HOLDING OVER
LU**



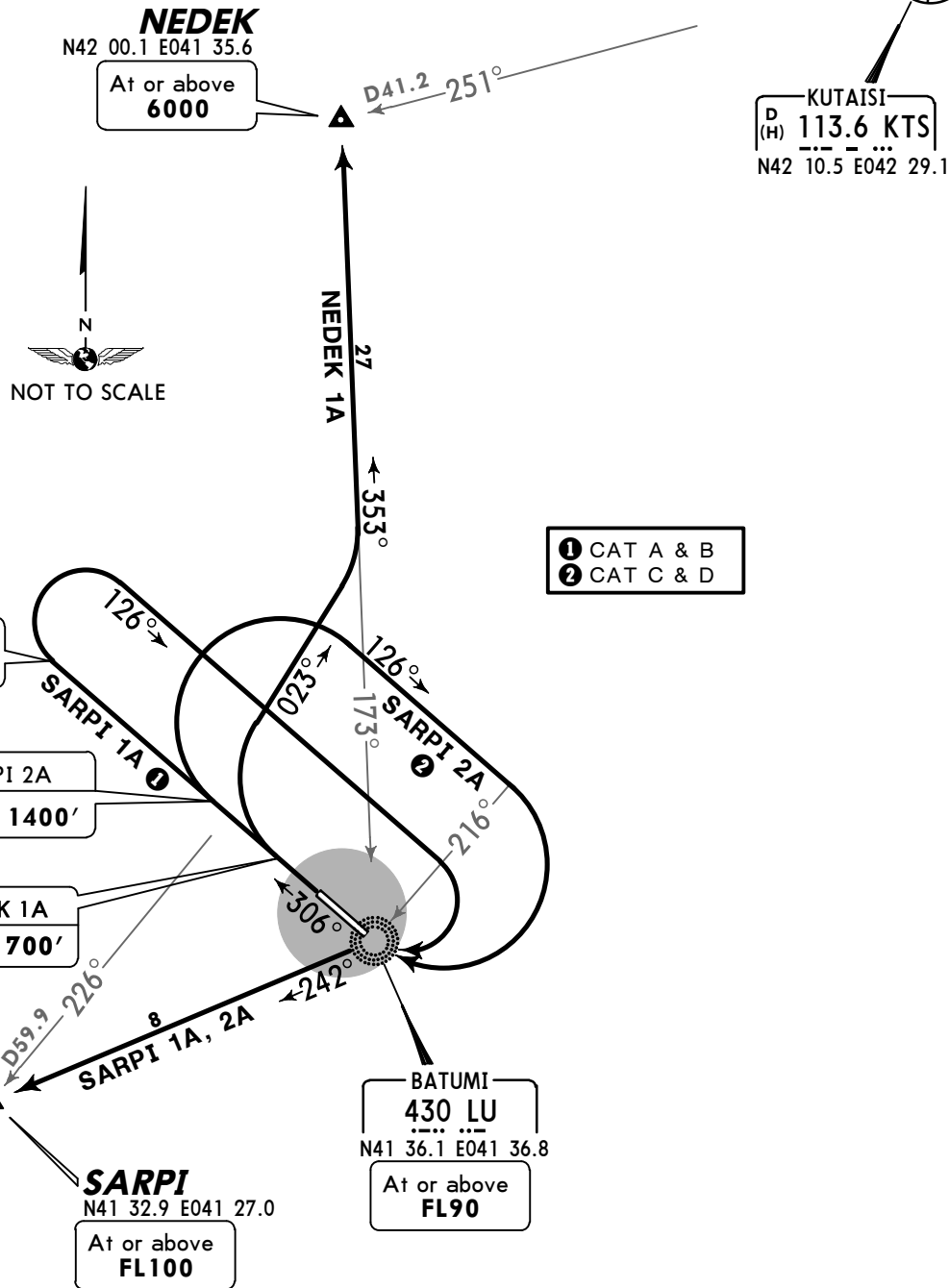
STAR	ROUTING
NEDEK 1B	On 173° bearing to LU.
NEDEK 2B	On 209° track to AKAKI.
SOSED 1B	On 133° bearing to LU.
SOSED 2B	On 137° track to AKAKI.
SARPI 1B	On 062° bearing to LU.

Apt Elev
108'

Trans level: FL90 Trans alt: 7000'



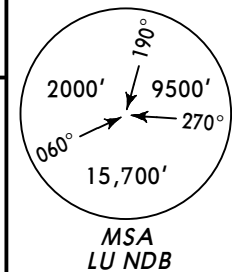
NEDEK ONE ALFA (NEDEK 1A) [NEDE1A]
SARPI ONE ALFA (SARPI 1A) [SARP1A] ①
SARPI TWO ALFA (SARPI 2A) [SARP2A] ②
RWY 31 DEPARTURES
SPEED MAX 250 KT BELOW FL110
WITHIN BATUMI TMA



SID	ROUTING
NEDEK 1A	Climb on runway heading to 700', turn RIGHT, 023° track, intercept 353° bearing from LU to NEDEK.
SARPI 1A	Climb on runway heading to 3500', turn RIGHT, 126° track, when passing 216° bearing to LU turn RIGHT to LU, 242° bearing to SARPI.
SARPI 2A	Climb on runway heading to 1400', turn RIGHT, 126° track, when passing 216° bearing to LU turn RIGHT to LU, 242° bearing to SARPI.

Apt Elev
108'

Trans level: FL90 Trans alt: 7000'



SARPI THREE ALFA (SARPI 3A) [SARP3A] ①
SARPI FOUR ALFA (SARPI 4A) [SARP4A] ②
SOSED ONE ALFA (SOSED 1A) [SOSE1A]

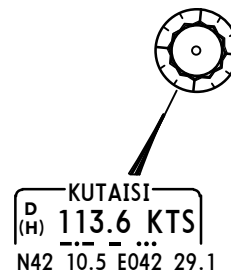
RWY 31 DEPARTURES

~~SPEEDS~~ MAX 250 KT BELOW FL110
WITHIN BATUMI TMA

SOSED
N42 06.6 E041 00.3

At or above
FL90

D66.3 262°



③ 023° →

At 3400'

At 2200'

At 700'

SARPI
N41 32.9 E041 27.0

At or above
FL100

D59.9 226°

BATUMI
430 LU
N41 36.1 E041 36.8
At or above
FL90

SARPI 3A, 4A

These SIDs require a minimum climb gradient of 4%.

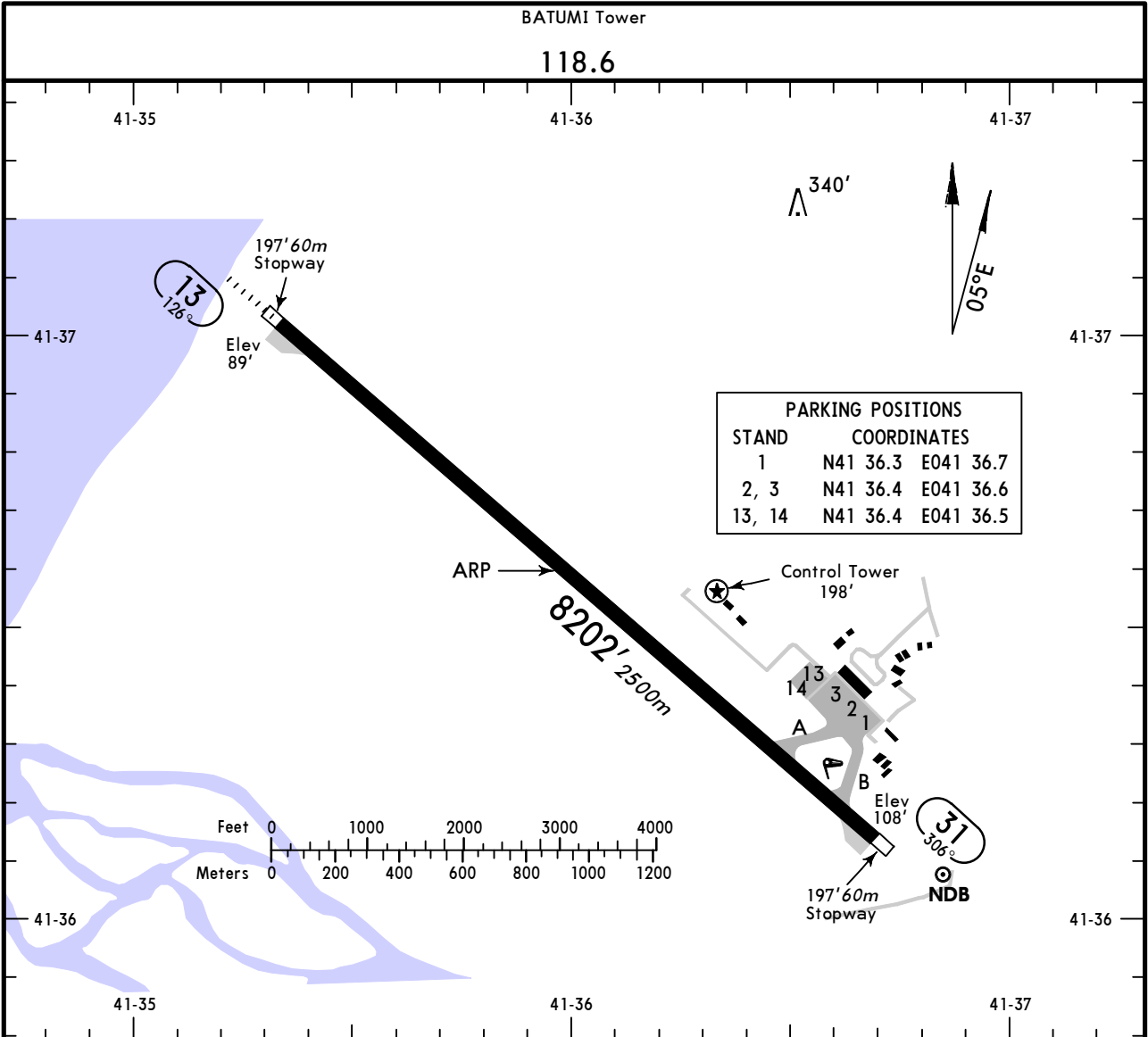
Gnd speed-KT	75	100	150	200	250	300
4% V/V (fpm)	304	405	608	810	1013	1215

① CAT A & B
② CAT C & D

SID

ROUTING

SARPI 3A	Climb on runway heading to 700', turn RIGHT, 356° track, at 3400' turn RIGHT to LU, 242° bearing to SARPI
SARPI 4A	Climb on runway heading to 700', turn RIGHT, 356° track, at 2200' turn RIGHT to LU, 242° bearing to SARPI
SOSED 1A	Climb on runway heading to 700', turn RIGHT, 023° track, intercept 313° bearing from LU to SOSED.



PARKING POSITIONS	
STAND	COORDINATES
1	N41 36.3 E041 36.7
2, 3	N41 36.4 E041 36.6
13, 14	N41 36.4 E041 36.5

ADDITIONAL RUNWAY INFORMATION

RWY		USABLE LENGTHS			WIDTH
		Threshold	Landing Beyond Glide Slope	Take-off	
13	HIRL (60m) CL (30m) HIALS PAPI-L (angle 3.0°)		7291' 2222m	NA ①	148'
31	HIRL (60m) CL (30m)	NA ①			45m

① Permitted DAY only: For acft with MTOW not exceeding 5700kg.

JAR-OPS

TAKE-OFF ①

	Rwy 31			
	LVP must be in force			
	RL & CL	RCLM (DAY only) or RL	RCLM (DAY only) or RL	NIL (DAY only)
A				
B	200m	250m	400m	500m
C				
D	250m	300m		

① Operators applying U.S. Ops Specs: CL required below 300m.

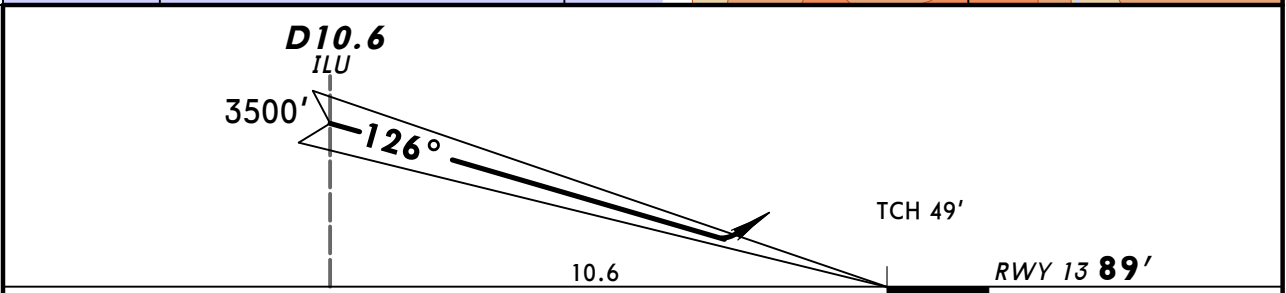
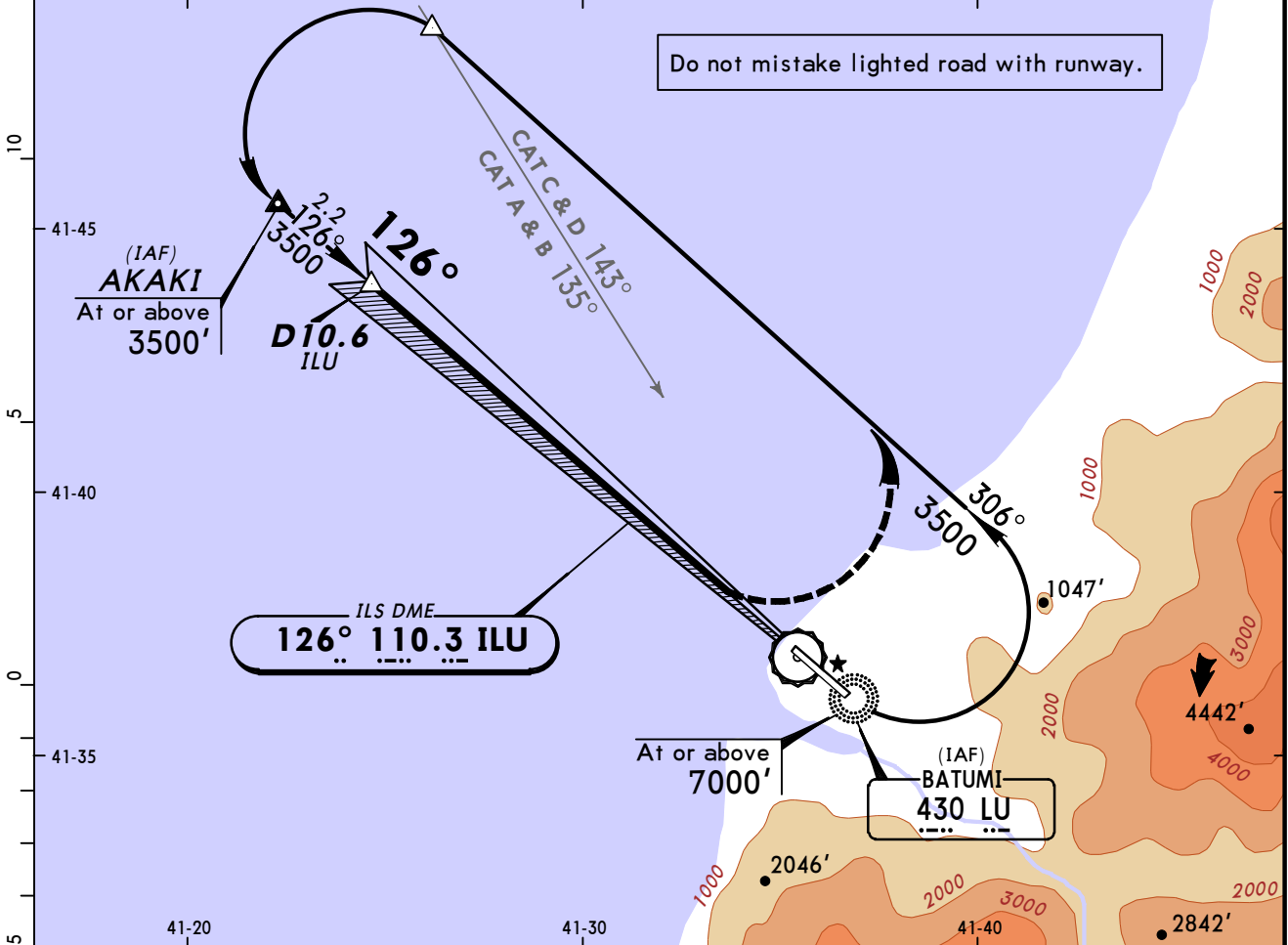
STRAIGHT-IN RWY		A	B	C	D
13	ILS	649'(560') R1500m	649'(560') R1500m	669'(580') C2400m	669'(580') C2400m
	LOC	NOT AUTH	NOT AUTH	NOT AUTH	NOT AUTH

TAKE-OFF RWY 31

LVP must be in force					
	RL, CL & mult. RVR req	RL & CL	RCLM (DAY only) or RL	RCLM (DAY only) or RL	NIL (DAY only)
A					
B	<i>150m</i>	<i>200m</i>	<i>250m</i>	<i>400m</i>	<i>500m</i>
C					
D	<i>200m</i>	<i>250m</i>	<i>300m</i>		

BATUMI Approach 124.42			BATUMI Tower 118.6		
LOC ILU 110.3	Final Apch Crs 126°	GS D10.6 ILU 3500' (3411')	ILS DA(H) Refer to Minimums	Apt Elev 108' RWY 89'	
MISSED APCH: Turn LEFT onto heading 306° climbing to 3500' and as directed.					

Alt Set: hPa Rwy Elev: 3 hPa Trans level: FL 90 Trans alt: 7000'
 1. ILS DME reads zero at rwy 13 threshold. 2. Procedure restricted to MAX 230 KT.



Gnd speed-Kts	70	90	100	120	140	160
GS 3.00°	372	478	531	637	743	859

HIALS
 PAPI
 3500' on 306°
 LT hdg

JAR-OPS	STRAIGHT-IN LANDING RWY 13	
ILS	LOC (GS out)	
Missed approach climb grad mim 3.0%		
DA(H)		
AB: 649' (560') CD: 669' (580')		
FULL	ALS out	

PANS OPS	A		
	B		
	C	RVR 1000m	RVR 1200m
	D		NOT AUTHORIZED

Chart changes since cycle 26-2013

ADD = added chart, REV = revised chart, DEL = deleted chart.

ACT	PROCEDURE IDENT	INDEX	REV DATE	EFF DATE
-----	-----------------	-------	----------	----------

BATUMI, (BATUMI - UGSB)

TERMINAL CHART CHANGE NOTICES

No Chart Change Notices for Airport UGSB